

Product datasheet for **TA306616**

HAX1 Rabbit Polyclonal Antibody

Product data:

Product Type:	Primary Antibodies
Applications:	WB
Recommended Dilution:	WB: 1 - 2 ug/mL
Reactivity:	Human, Mouse, Rat
Host:	Rabbit
Isotype:	IgG
Clonality:	Polyclonal
Immunogen:	Hax1b antibody was raised against a 10 amino acid peptide near the amino terminus of human Hax1b.
Formulation:	PBS containing 0.02% sodium azide.
Concentration:	1ug/ul
Purification:	Affinity chromatography purified via peptide column
Conjugation:	Unconjugated
Storage:	Store at -20°C as received.
Stability:	Stable for 12 months from date of receipt.
Gene Name:	HCLS1 associated protein X-1
Database Link:	NP_001018238

[Entrez Gene 23897 Mouse](#)[Entrez Gene 291202 Rat](#)[Entrez Gene 10456 Human](#)
[O00165](#)

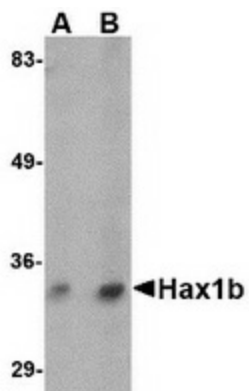
Background: The HS-1 associated protein X-1 (Hax1) was initially identified in a yeast two-hybrid assay on the basis of its ability to bind to the hemopoietic cell-specific protein 1 (HS-1). Hax1 possesses anti-apoptotic activity and is structurally related to Bcl-2 family members, including the presence of BH1- and BH2-like domains. It has recently been shown to interact with HIV viral protein R (Vpr), a protein required for viral pathogenesis of HIV and linked to T-cell apoptosis through activation of caspases 3 and 9. Other studies indicate that Hax1-mediated processing of HtrA2 (also known as Omi) by the mitochondrial protease PARL allows survival of lymphocytes and neurons when cytokines are limiting. At least four isoforms of Hax1 are known to exist. This antibody is predicted to recognize Hax1b.



[View online »](#)

Synonyms: HCLSBP1; HS1BP1; SCN3

Product images:



Western blot analysis of Hax1b in mouse brain tissue lysate with Hax1b antibody at (A) 1 and (B) 2 ug/ml.