

Product datasheet for **TA306614**

NUP160 Rabbit Polyclonal Antibody

Product data:

Product Type:	Primary Antibodies
Applications:	IF, IHC, WB
Recommended Dilution:	WB: 0.5 - 1 ug/mL, ICC: 2.5 ug/mL, IF: 20 ug/mL
Reactivity:	Human, Mouse, Rat
Host:	Rabbit
Isotype:	IgG
Clonality:	Polyclonal
Immunogen:	NUP160 antibody was raised against a 14 amino acid peptide from near the carboxy terminus of human NUP160.
Formulation:	PBS containing 0.02% sodium azide.
Concentration:	1ug/ul
Purification:	Affinity chromatography purified via peptide column
Conjugation:	Unconjugated
Storage:	Store at -20°C as received.
Stability:	Stable for 12 months from date of receipt.
Gene Name:	nucleoporin 160kDa
Database Link:	NP_056046 Entrez Gene 59015 Mouse Entrez Gene 311182 Rat Entrez Gene 23279 Human Q12769



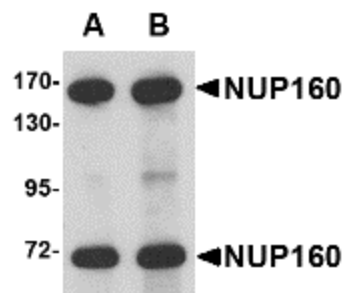
[View online »](#)

Background:

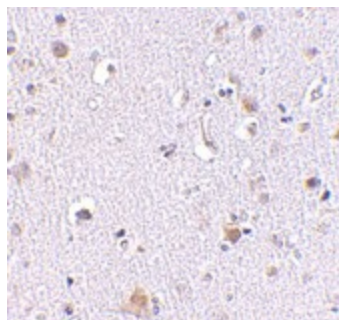
The nuclear pore complex (NPC) is a protein assembly localized at the nuclear rim and mediates macromolecular transport between the nucleus and the cytoplasm. The mammalian nucleoporin (NUP)-160 is part of the hetero-oligomeric complex that also contains NUP107, NUP133, NUP96, and mammalian homolog of yeast sec13p. While the majority of the NUP107-160 nuclear pore sub-complex localizes to the nuclear pore, a small fraction is observed at kinetochores and pro-metaphase spindle poles in mitotic cells in association with proteins such as Mad1, Mad2, Bub3 and Cdc20. Immunodepletion of the NUP107-160 complex resulted in defective spindle assembly indicating that it has multiple functions. NUP160 has recently been identified as an HIV dependency factor (HDF), suggesting that NUP160 may be an important drug target in HIV treatment. Multiple isoforms of NUP160 are known to exist.

Synonyms:

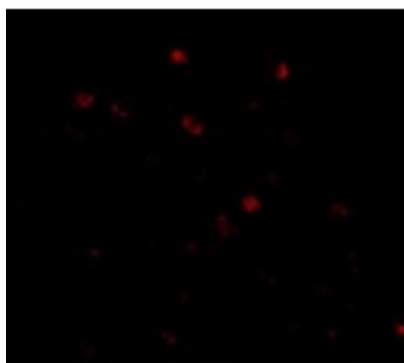
DKFZp686M14102; MGC150678; MGC150679

Product images:


Western blot analysis of NUP160 in rat brain tissue lysate with NUP160 antibody at (A) 0.5 and (B) 1 ug/ml.



Immunohistochemistry of NUP160 in human brain tissue with NUP160 antibody at 2.5 ug/ml.



Immunofluorescence of NUP160 in Human Brain cells with NUP160 antibody at 20 ug/mL.