

## Product datasheet for **TA306613**

### **NUP155 Rabbit Polyclonal Antibody**

#### **Product data:**

Product Type:	Primary Antibodies
Applications:	WB
Recommended Dilution:	WB: 0.5 - 1 ug/mL
Reactivity:	Human, Mouse
Host:	Rabbit
Isotype:	IgG
Clonality:	Polyclonal
Immunogen:	NUP155 antibody was raised against a 18 amino acid peptide from near the carboxy terminus of human NUP155.
Formulation:	PBS containing 0.02% sodium azide.
Concentration:	1 mg/ml
Purification:	Affinity chromatography purified via peptide column
Conjugation:	Unconjugated
Storage:	Store at -20°C as received.
Stability:	Stable for 12 months from date of receipt.
Gene Name:	nucleoporin 155kDa
Database Link:	<a href="#">NP_705618</a> <a href="#">Entrez Gene 9631 Human</a> <a href="#">O75694</a>



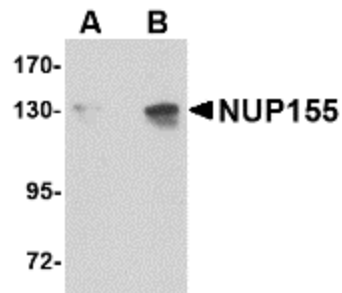
[View online »](#)

**Background:**

The nuclear pore complex (NPC) is a protein assembly localized at the nuclear rim and mediates macromolecular transport between the nucleus and the cytoplasm. One protein in this assembly is the nucleoporin (NUP)-155, which is localized symmetrically to both the nucleoplasmic and cytoplasmic faces of the NPC. NUP155 has been reported to interact with both NUP35 and the mRNA export factor Gle1, but the functions of these interactions are still unknown. NUP155 has also been shown to be required for NPC assembly and nuclear envelope (NE) membrane fusion. NUP155 is recruited late in NE formation, suggesting that NUP155 defines an essential late step in NE assembly. NUP155 has recently been identified as an HIV dependency factor (HDF), suggesting that NUP155 may be an important drug target in HIV treatment. At least two isoforms of NUP155 are known to exist.

**Synonyms:**

ATFB15; N155

**Product images:**

Western blot analysis of NUP155 in P815 cell lysate with NUP155 antibody at (A) 0.5 and (B) 1 ug/ml.