

## Product datasheet for **TA306610**

### Lass5 (CERS5) Rabbit Polyclonal Antibody

#### Product data:

Product Type:	Primary Antibodies
Applications:	IF, IHC, WB
Recommended Dilution:	WB: 1 - 2 ug/mL, ICC: 2.5 ug/mL, IF: 20 ug/mL
Reactivity:	Human, Mouse, Rat
Host:	Rabbit
Isotype:	IgG
Clonality:	Polyclonal
Immunogen:	LASS5 antibody was raised against a 18 amino acid peptide near the amino terminus of the human LASS5.
Formulation:	PBS containing 0.02% sodium azide.
Concentration:	1ug/ul
Purification:	Affinity chromatography purified via peptide column
Conjugation:	Unconjugated
Storage:	Store at -20°C as received.
Stability:	Stable for 12 months from date of receipt.
Gene Name:	ceramide synthase 5
Database Link:	<a href="#">NP_671723</a> <a href="#">Entrez Gene 71949 Mouse</a> <a href="#">Entrez Gene 366984 Rat</a> <a href="#">Entrez Gene 91012 Human</a> <a href="#">Q8N5B7</a>



[View online »](#)

**Background:**

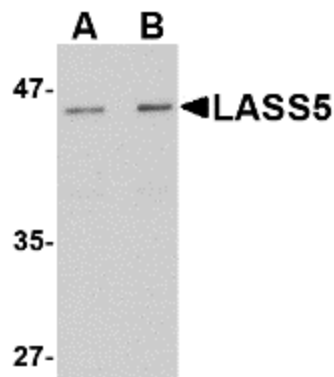
The LASS (longevity assurance homolog) family members represent a subgroup of the homeobox gene family and are highly conserved from yeasts to mammals. Six members of this family of proteins have been characterized (LASS1-6) and all are involved in ceramide synthesis during cell growth regulation and cancer differentiation. LASS5, also called Trh4, is a 392 amino acid endoplasmic reticulum, multi-pass membrane protein. Functioning as a dihydro-ceramide synthase, LASS5 is involved in the production of sphingolipids containing mainly one fatty acid donor (N-linked palmitoyl-ceramide) in a fumonisin B1-independent manner. It uses palmitoyl-CoA as an acyl donor and is involved in the synthesis of C14, C16 and C18-ceramide. LASS5 is the most abundantly expressed and predominant ceramide synthase isoform in lung epithelia. Recent studies show that LASS5 partially correct growth and apoptosis. Multiple isoforms of LASS5 are known to exist. This antibody may cross-react with the highly homologous LASS6.

**Synonyms:**

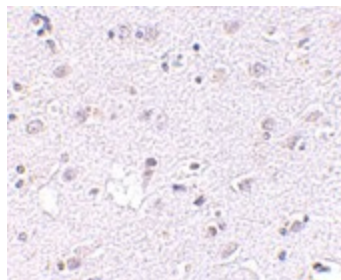
LASS5; Trh4

**Protein Families:**

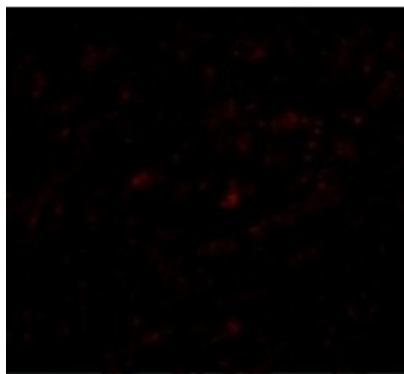
Transcription Factors, Transmembrane

**Product images:**


Western blot analysis of LASS5 in rat brain tissue lysate with LASS5 antibody at (A) 1 and (B) 2 ug/ml.



Immunohistochemistry of LASS5 in human brain tissue with LASS5 antibody at 2.5 ug/ml.



Immunofluorescence of LASS5 in Human Brain cells with LASS5 antibody at 20 ug/mL.