

Product datasheet for **TA306608**

GDF6 Rabbit Polyclonal Antibody

Product data:

Product Type:	Primary Antibodies
Applications:	WB
Recommended Dilution:	WB: 0.5 - 1 ug/mL
Reactivity:	Human, Mouse, Rat
Host:	Rabbit
Isotype:	IgG
Clonality:	Polyclonal
Immunogen:	GDF6 antibody was raised against a 17 amino acid peptide near the carboxy terminus of the human GDF6.
Formulation:	PBS containing 0.02% sodium azide.
Purification:	Affinity chromatography purified via peptide column
Conjugation:	Unconjugated
Storage:	Store at -20°C as received.
Stability:	Stable for 12 months from date of receipt.
Gene Name:	growth differentiation factor 6
Database Link:	NP_001001557 Entrez Gene 242316 MouseEntrez Gene 252834 RatEntrez Gene 392255 Human Q6KF10

Background: Growth differentiation factors (GDFs) are members of the transforming growth factor (TGF) superfamily that is involved in embryonic development and adult tissue homeostasis. Both GDF6 and GDF7 are closely related to GDF5 which has been shown to induce activation of plasminogen activator, thereby inducing angiogenesis. It is predominantly expressed in long bones during fetal embryonic development and is involved in bone formation. In *Xenopus*, GDF6 is expressed at the edge of the neural plate and within the anterior neural plate including the eye fields. GDF6 is required for normal formation of some bones and joints in the limbs, skull, and axial skeleton. It may regulate patterning of the ectoderm by interacting with bone morphogenetic proteins (BMPs), and control eye development. Mutations in this gene result in colobomata, which are congenital abnormalities in ocular development, and in Klippel-Feil syndrome (KFS), a congenital disorder of spinal segmentation.



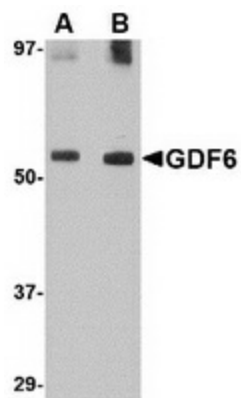
[View online »](#)

Synonyms: BMP-13; BMP13; CDMP2; KFM; KFS; KFS1; KFSL; SGM1

Protein Families: Druggable Genome, Secreted Protein

Protein Pathways: TGF-beta signaling pathway

Product images:



Western blot analysis of GDF6 in SK-N-SH lysate with GDF6 antibody at (A) 0.5 and (B) 1 ug/ml.