

Product datasheet for **TA306607**

CPEB1 Rabbit Polyclonal Antibody

Product data:

Product Type:	Primary Antibodies
Applications:	WB
Recommended Dilution:	WB: 1 - 2 ug/mL
Reactivity:	Human, Mouse, Rat
Host:	Rabbit
Isotype:	IgG
Clonality:	Polyclonal
Immunogen:	CPEB1 antibody was raised against a 14 amino acid peptide from near the amino terminus of human CPEB1.
Formulation:	PBS containing 0.02% sodium azide.
Concentration:	1ug/ul
Purification:	Affinity chromatography purified via peptide column
Conjugation:	Unconjugated
Storage:	Store at -20°C as received.
Stability:	Stable for 12 months from date of receipt.
Gene Name:	cytoplasmic polyadenylation element binding protein 1
Database Link:	NP_001073001 Entrez Gene 12877 Mouse Entrez Gene 293056 Rat Entrez Gene 64506 Human Q9BZB8

Background: CPEB1 is an RNA binding protein that contains an RNA-recognition motif and a zinc finger-containing region found in a wide range of vertebrates and invertebrates. CPEB1 forms the nucleus of a complex of factors that regulate poly(A) elongation and promotes polyadenylation-induced translation. CPEB1 mediates many diverse biological processes such as germ cell development, cell division and senescence, and synaptic plasticity. Recently, it was discovered that CPEB1 is involved in beta-catenin mRNA translation and cell migration in astrocytes as well as regulating hypoxia-inducible factor (HIF)-1 expression, demonstrating the wide range of processes in which CPEB1 plays a role. At least four isoforms of CPEB1 are known to exist.

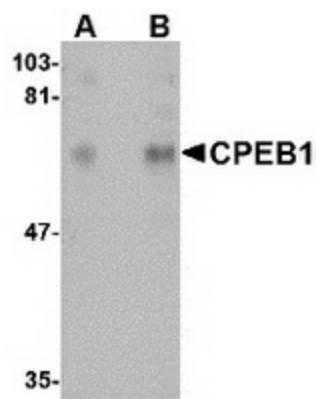


[View online »](#)

Synonyms: CPE-BP1; CPEB; CPEB-1; h-CPEB; hCPEB-1

Protein Pathways: Dorso-ventral axis formation, Oocyte meiosis, Progesterone-mediated oocyte maturation

Product images:



Western blot analysis of CPEB1 in rat brain tissue lysate with CPEB1 antibody at (A) 1 and (B) 2 ug/ml.