

Product datasheet for **TA306602**

BICD2 Rabbit Polyclonal Antibody

Product data:

Product Type:	Primary Antibodies
Applications:	WB
Recommended Dilution:	WB: 1 - 2 ug/mL
Reactivity:	Human, Mouse, Rat
Host:	Rabbit
Isotype:	IgG
Clonality:	Polyclonal
Immunogen:	BICD2 antibody was raised against a 13 amino acid peptide from near the carboxy terminus of human BICD2.
Formulation:	PBS containing 0.02% sodium azide.
Concentration:	1ug/ul
Purification:	Affinity chromatography purified via peptide column
Conjugation:	Unconjugated
Storage:	Store at -20°C as received.
Stability:	Stable for 12 months from date of receipt.
Gene Name:	BICD cargo adaptor 2
Database Link:	NP_001003800 Entrez Gene 76895 Mouse Entrez Gene 306809 Rat Entrez Gene 23299 Human Q8TD16



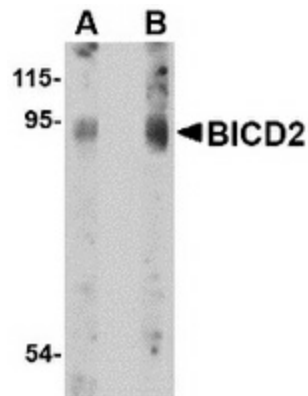
[View online »](#)

Background:

BICD2 is the second human homolog discovered to the *Drosophila* Bicaudal-D protein that forms part of the cytoskeleton and mediates the correct sorting of mRNAs for oocyte- and axis-determining factors during oogenesis. Similar to the highly homologous protein BICD1, BICD2 can bind to dynein-dynactin complex, primarily through the dynamitin subunit of dynactin. The C-terminus of BICD2 targets the protein to the Golgi complex while the N-terminal domain of BICD2 co-immunoprecipitates with cytoplasmic dynein, suggesting BICD2 plays a role in the dynein-dynactin interaction on the surface of membranous organelles. Mice engineered to overexpress the BICD2 amino terminal domain in neurons developed amyotrophic lateral sclerosis (ALS)-like features such as Golgi fragmentation, neurofilament swelling in proximal axons, etc., suggesting that impaired dynein/dynactin function may explain some of the pathological features observed in ALS patients. This BICD2 antibody will not cross-react with BICD1.

Synonyms:

bA526D8.1; SMALED2

Product images:

Western blot analysis of BICD2 in A549 cell lysate with BICD2 antibody at (A) 1 and (B) 2 ug/ml.