

Product datasheet for **TA306601**

BICD1 Rabbit Polyclonal Antibody

Product data:

Product Type:	Primary Antibodies
Applications:	IF, WB
Recommended Dilution:	WB: 1 ug/mL, IF: 10 ug/mL
Reactivity:	Human, Mouse, Rat
Host:	Rabbit
Isotype:	IgG
Clonality:	Polyclonal
Immunogen:	BICD1 antibody was raised against a 15 amino acid peptide from near the carboxy terminus of human BICD1.
Formulation:	PBS containing 0.02% sodium azide.
Concentration:	1ug/ul
Purification:	Affinity chromatography purified via peptide column
Conjugation:	Unconjugated
Storage:	Store at -20°C as received.
Stability:	Stable for 12 months from date of receipt.
Gene Name:	BICD cargo adaptor 1
Database Link:	NP_001705 Entrez Gene 636 Human Q96G01

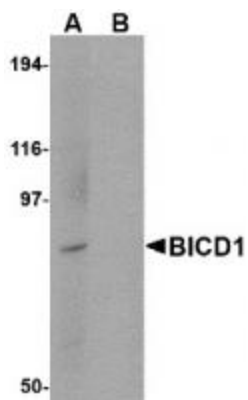
Background: BICD1 was initially identified as the human homolog to Drosophila Bicaudal-D protein that forms part of the cytoskeleton and mediates the correct sorting of mRNAs for oocyte- and axis-determining factors during oogenesis. BICD1 can bind to dynein-dynactin and co-localizes with Rab6A on the trans-Golgi network and cytoplasmic vesicles, suggesting BICD1 regulates COPI-independent Golgi-ER transport. BICD1 will also interact with Rab6B, a Rab6 isoform that is expressed primarily in brain. Live cell imaging showed bi-directional movement of Rab6B structures in SK-N-SH neurites, indicating that BICD1 is involved in the Rab6B regulation of retrograde cargo transport in neuronal cells. At least two isoforms of BICD1 are known to exist; this antibody will only recognize the larger isoform.



[View online »](#)

Synonyms: BICD

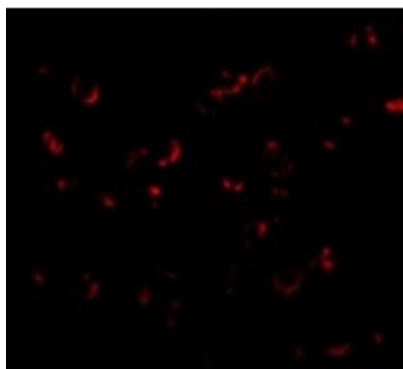
Product images:



Western blot analysis of BICD1 in Daudi cell lysate with BICD1 antibody at 1 ug/mL in (A) the absence and (B) the presence of blocking peptide.



Immunocytochemistry of BICD1 in Daudi cells with BICD1 antibody at 2.5 ug/mL.



Immunofluorescence of BICD1 in Daudi cells with BICD1 antibody at 20 ug/mL.