

Product datasheet for **TA306599**

CLIP170 (CLIP1) Rabbit Polyclonal Antibody

Product data:

Product Type:	Primary Antibodies
Applications:	IF, WB
Recommended Dilution:	WB: 0.5 - 1 ug/mL, IF: 20 ug/mL
Reactivity:	Human, Mouse, Rat
Host:	Rabbit
Isotype:	IgG
Clonality:	Polyclonal
Immunogen:	CLIP170 antibody was raised against a 17 amino acid peptide from near the carboxy terminus of human CLIP170.
Formulation:	PBS containing 0.02% sodium azide.
Concentration:	1ug/ul
Purification:	Affinity chromatography purified via peptide column
Conjugation:	Unconjugated
Storage:	Store at -20°C as received.
Stability:	Stable for 12 months from date of receipt.
Gene Name:	CAP-Gly domain containing linker protein 1
Database Link:	NP_002947 Entrez Gene 56430 Mouse Entrez Gene 65201 Rat Entrez Gene 6249 Human P30622

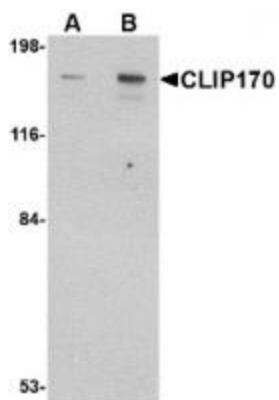
Background: CLIP170 was initially identified as a new type of intermediate filament associated protein that is highly expressed in Reed-Sternberg cells, the tumoral cells diagnostic for Hodgkin's disease. Later experiments showed that it is located at microtubule plus ends and is required for the binding of endocytic carrier vesicles. CLIP170 has also been suggested to act with LIS1, a protein implicated in brain development, to regulate dynein/dynactin binding microtubules. Other studies suggest that CLIP170 can influence the formation of lamellipodia and cell invasion by invasive breast cancer cells by regulating the release of kinesin and IQGAP1 from a complex of those proteins, CLIP170 and Rac1. At least two isoforms of CLIP170 are known to exist.



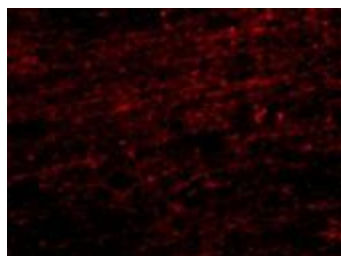
[View online »](#)

Synonyms: CLIP; CLIP-170; CLIP170; CYLN1; RSN

Product images:



Western blot analysis of CLIP170 in rat brain tissue lysate with CLIP170 antibody at (A) 0.5 and (B) 1 ug/mL.



Immunofluorescence of CLIP170 in human brain tissue with CLIP170 antibody at 20 ug/mL.