

Product datasheet for **TA306592**

NANOS2 Rabbit Polyclonal Antibody

Product data:

Product Type:	Primary Antibodies
Applications:	WB
Recommended Dilution:	WB: 2 - 4 ug/mL
Reactivity:	Human, Mouse, Rat
Host:	Rabbit
Isotype:	IgG
Clonality:	Polyclonal
Immunogen:	Nanos2 antibody was raised against a 13 amino acid peptide near the carboxy terminus of the human Nanos2.
Formulation:	PBS containing 0.02% sodium azide.
Concentration:	1ug/ul
Purification:	Affinity chromatography purified via peptide column
Conjugation:	Unconjugated
Storage:	Store at -20°C as received.
Stability:	Stable for 12 months from date of receipt.
Gene Name:	nanos homolog 2 (Drosophila)
Database Link:	NP_001025032 Entrez Gene 365213 Rat Entrez Gene 378430 Mouse Entrez Gene 339345 Human P60321



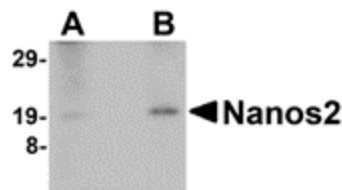
[View online »](#)

Background:

Nanos is a zinc-finger containing, RNA-binding protein that has been implicated in germ cell development in both invertebrates and vertebrates. In drosophila, Nanos represses apoptosis during development to ensure proper germ-line development. Unlike Nanos1 whose expression in mice is dispensable, the Nanos2 and Nanos3 proteins are required for germ cell development. Nanos2-null primordial germ cells (PGCs) die only in the male gonads and show no defects in females, while Nanos3-null PGCs are lost during the migration stage regardless of sex. Nanos2 and Nanos3 have distinct expression patterns during embryo development, suggesting that these two proteins do not have redundant functions. However, expression of Nanos2 can at least partially replace Nanos3 function in a Nanos3-null background. Nanos3 expression can not rescue Nanos2-null defects. This Nanos2 antibody will not cross-react with either Nanos 1 or Nanos3.

Synonyms:

NOS2; ZC2HC12B

Product images:

Western blot analysis of Nanos2 in human testis lysate with Nanos2 antibody at (A) 2 and (B) 4 ug/ml.