

Product datasheet for **TA306591**

WNT10A Rabbit Polyclonal Antibody

Product data:

Product Type:	Primary Antibodies
Applications:	IF, IHC, WB
Recommended Dilution:	WB: 1 - 2 ug/mL, ICC: 10 ug/mL, IF: 20 ug/mL
Reactivity:	Human, Mouse, Rat
Host:	Rabbit
Isotype:	IgG
Clonality:	Polyclonal
Immunogen:	Wnt10a antibody was raised against a 14 amino acid peptide from near the carboxy terminus of human Wnt10a.
Formulation:	PBS containing 0.02% sodium azide.
Concentration:	1ug/ul
Purification:	Affinity chromatography purified via peptide column
Conjugation:	Unconjugated
Storage:	Store at -20°C as received.
Stability:	Stable for 12 months from date of receipt.
Gene Name:	Wnt family member 10A
Database Link:	NP_079492

[Entrez Gene 22409 Mouse](#)[Entrez Gene 316527 Rat](#)[Entrez Gene 80326 Human](#)
[Q9GZT5](#)

Background: Wnt10a is a member of the Wnt family, a gene family that encodes secreted signaling proteins that play crucial roles in normal development such as regulation of cell fate and patterning during embryogenesis as well as neoplastic transformation. Elevated levels of Wnt10a have been detected in several human tumors and cancer cell lines including colorectal cancer and chronic lymphocytic leukemia and it has been suggested that uncontrolled Wnt signaling may contribute to the defect in apoptosis that characterizes these malignancies. Recently, a mutation in Wnt10a was found to be associated with odontonycho-dermal dysplasia, an autosomal recessive ectodermal dysplasia. Despite the high homology of Wnt10a to Wnt10b, this Wnt10a antibody will not cross-react with Wnt10b.



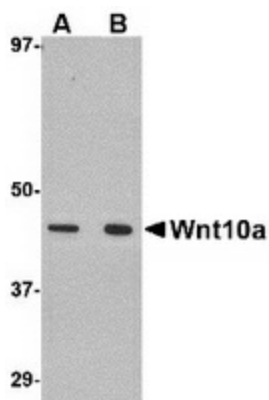
[View online »](#)

Synonyms: OODD; SSPS; STHAG4

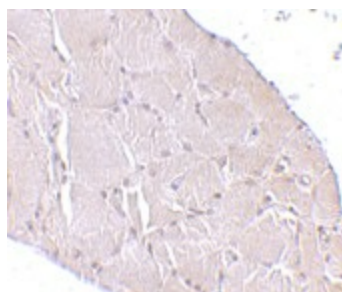
Protein Families: Secreted Protein, Transmembrane

Protein Pathways: Basal cell carcinoma, Hedgehog signaling pathway, Melanogenesis, Pathways in cancer, Wnt signaling pathway

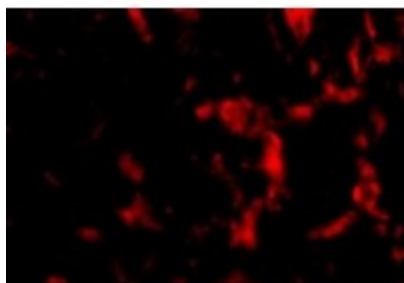
Product images:



Western blot analysis of Wnt10a in RAW264.7 cell lysate with Wnt10a antibody at (A) 1 and (B) 2 ug/ml.



Immunohistochemistry of Wnt10a in human skeletal muscle tissue cells with Wnt10a antibody at 10 ug/ml.



Immunofluorescence of Wnt10a in Human Skeletal Muscle tissue with Wnt10a antibody at 20 ug/mL.