

Product datasheet for **TA306585**

DLGAP2 Rabbit Polyclonal Antibody

Product data:

Product Type:	Primary Antibodies
Applications:	IF, IHC, WB
Recommended Dilution:	WB: 0.5 - 1 ug/mL, ICC: 5 ug/mL, IF: 20 ug/mL
Reactivity:	Human, Mouse, Rat
Host:	Rabbit
Isotype:	IgG
Clonality:	Polyclonal
Immunogen:	SAPAP2 antibody was raised against a 16 amino acid peptide from near the center of human SAPAP2.
Formulation:	PBS containing 0.02% sodium azide.
Concentration:	1ug/ul
Purification:	Affinity chromatography purified via peptide column
Conjugation:	Unconjugated
Storage:	Store at -20°C as received.
Stability:	Stable for 12 months from date of receipt.
Gene Name:	DLG associated protein 2
Database Link:	NP_004736 Entrez Gene 116681 Rat Entrez Gene 244310 Mouse Entrez Gene 9228 Human Q9P1A6

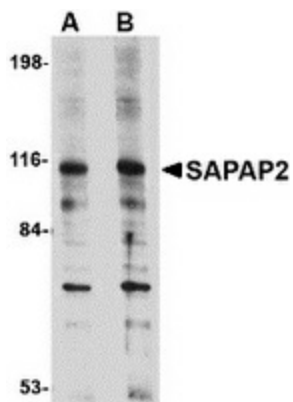
Background: SAP90/PSD-95-associated protein 2 (SAPAP2, also known as DLGAP2) is a member of a protein family whose members specifically interact with PSD-95/SAP90, a membrane-associated guanylate kinase localized at postsynaptic density (PSD) in neuronal cells. Like the other SAPAP proteins, SAPAP2 is thought to be an adaptor protein that also interacts with different synaptic scaffolding proteins, cytoskeletal and signaling components, such as focal adhesion kinase (FAK) and proline-rich tyrosine kinase 2 (PYK2). SAPAP2 mRNA is targeted to cell bodies in a similar manner to SAPAP1 and -4, whereas SAPAP3 mRNA is detected mainly in cell bodies. At least three isoforms of SAPAP2 are known to exist. This SAPAP2 antibody will not cross-react with other SAPAP proteins.



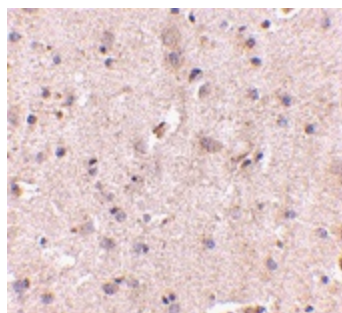
[View online »](#)

Synonyms: DAP2; SAPAP2

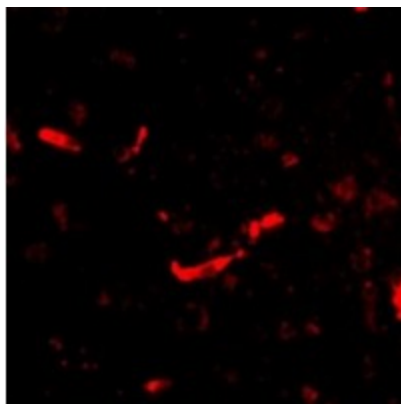
Product images:



Western blot analysis of SAPAP2 in L1210 cell lysate with SAPAP2 antibody at (A) 0.5 and (B) 1 ug/ml.



Immunohistochemistry of SAPAP2 in human brain with SAPAP2 antibody at 5 ug/ml.



Immunofluorescence of SAPAP2 in Human Brain cells with SAPAP2 antibody at 20 ug/mL.