

Product datasheet for **TA306584**

DLGAP1 Rabbit Polyclonal Antibody

Product data:

Product Type:	Primary Antibodies
Applications:	IF, IHC, WB
Recommended Dilution:	WB: 0.5 - 1 ug/mL, ICC: 5 ug/mL, IF: 20 ug/mL
Reactivity:	Human, Mouse, Rat
Host:	Rabbit
Isotype:	IgG
Clonality:	Polyclonal
Immunogen:	SAPAP1 antibody was raised against a 18 amino acid peptide from near the center of human SAPAP1.
Formulation:	PBS containing 0.02% sodium azide.
Concentration:	1ug/ul
Purification:	Affinity chromatography purified via peptide column
Conjugation:	Unconjugated
Storage:	Store at -20°C as received.
Stability:	Stable for 12 months from date of receipt.
Gene Name:	DLG associated protein 1
Database Link:	NP_004737 Entrez Gene 9229 Human O60500



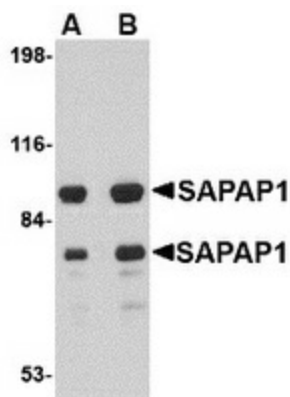
[View online »](#)

Background:

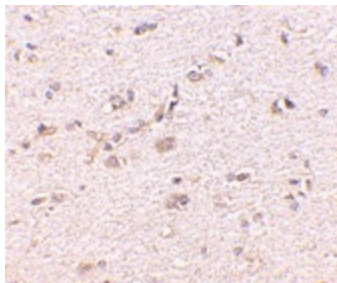
SAP90/PSD-95-associated protein 1 (SAPAP1, also known as DLGAP1 or GKAP) is a member of a protein family whose members specifically interact with PSD-95/SAP90, a membrane-associated guanylate kinase localized at postsynaptic density (PSD) in neuronal cells. Like the other SAPAP proteins, SAPAP1 is thought to be an adaptor protein that also interacts with different synaptic scaffolding proteins, cytoskeletal and signaling components, such as focal adhesion kinase (FAK) and proline-rich tyrosine kinase 2 (PYK2). SAPAP1 mRNA is targeted to cell bodies in a similar manner to SAPAP2 and -4, whereas SAPAP3 mRNA is detected mainly in cell bodies. SAPAP1 protein however, is targeted to the synapse and is not reliant on the synaptic localization of PSD-95 or the synaptic scaffolding molecule (S-SCAM). At least three isoforms of SAPAP1 are known to exist. This SAPAP1 antibody will not cross-react with other SAPAP proteins.

Synonyms:

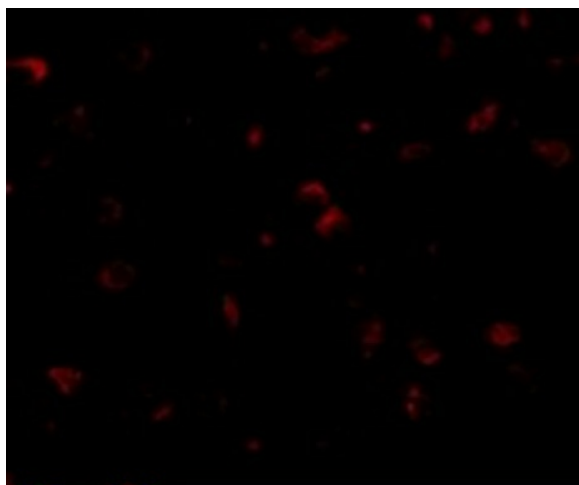
CNF; nephrin; NPHN

Product images:

Western blot analysis of SAPAP1 in rat brain tissue lysate with SAPAP1 antibody at (A) 0.5 and (B) 1 ug/ml.



Immunohistochemistry of LIMP2 in human skeletal muscle with LIMP2 antibody at 2.5 ug/ml.



Immunofluorescence of SAPAP1 in Human Brain cells with SAPAP1 antibody at 20 ug/mL.