

Product datasheet for **TA306581**

SNPH Rabbit Polyclonal Antibody

Product data:

Product Type:	Primary Antibodies
Applications:	IF, IHC, WB
Recommended Dilution:	WB: 2 - 4 ug/mL, ICC: 5 ug/mL, IF: 20 ug/mL
Reactivity:	Human, Mouse, Rat
Host:	Rabbit
Isotype:	IgG
Clonality:	Polyclonal
Immunogen:	Syntaphilin antibody was raised against a 18 amino acid peptide from near the amino terminus of human Syntaphilin.
Formulation:	PBS containing 0.02% sodium azide.
Concentration:	1ug/ul
Purification:	Affinity chromatography purified via peptide column
Conjugation:	Unconjugated
Storage:	Store at -20°C as received.
Stability:	Stable for 12 months from date of receipt.
Gene Name:	syntaphilin
Database Link:	NP_055538 Entrez Gene 241727 Mouse Entrez Gene 296267 Rat Entrez Gene 9751 Human O15079



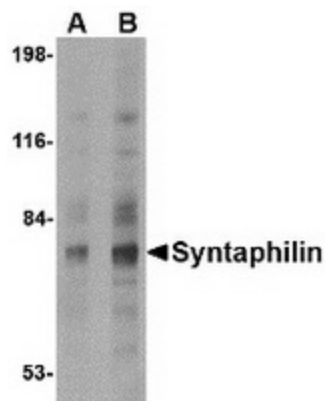
[View online »](#)

Background:

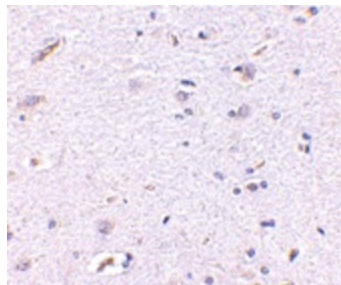
Syntaphilin was initially identified in a yeast two-hybrid screen with the carboxy terminal region of Syntaxin-1 as bait. Syntaxin-1 is a key component of the synaptic vesicle docking machinery that forms the SNARE complex with synaptobrevin and SNAP-25. Syntaphilin competes with SNAP-25 for binding to syntaxin-1 and inhibits the formation of the SNARE complex, thereby potentially regulating synaptic vesicle exocytosis. Syntaphilin also binds dynamin-1 and inhibits dynamin-dependent endocytosis. Mice lacking syntaphilin show an increased level of mitochondrial motility and a reduced density of axonal mitochondria. This correlates with an enhanced short-term facilitation and significant impairments in motor ability, suggesting syntaphilin plays a major role in presynaptic function. Despite its predicted molecular weight, Syntaphilin usually migrates at higher molecular weight in SDS-PAGE. Multiple isoforms are known to exist.

Synonyms:

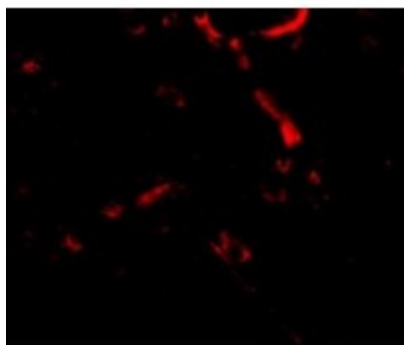
bA314N13.5

Product images:

Western blot analysis of Syntaphilin in human brain tissue lysate with Syntaphilin antibody at (A) 2 and (B) 4 ug/ml.



Immunohistochemistry of Syntaphilin in human brain with Syntaphilin antibody at 5 ug/ml.



Immunofluorescence of Syntaphilin in Human Brain cells with Syntaphilin antibody at 20 ug/mL.