

Product datasheet for **TA306577**

RIM2 (RIMS2) Rabbit Polyclonal Antibody

Product data:

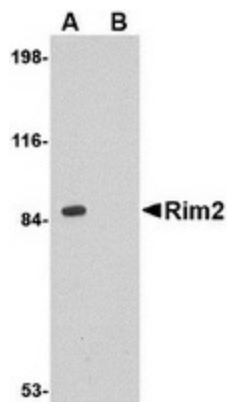
Product Type:	Primary Antibodies
Applications:	IF, IHC, WB
Recommended Dilution:	WB: 1 ug/mL, ICC: 5 ug/mL, IF: 20 ug/mL
Reactivity:	Human, Mouse, Rat
Host:	Rabbit
Isotype:	IgG
Clonality:	Polyclonal
Immunogen:	Rim2 antibody was raised against a 17 amino acid peptide near the center of the human Rim2.
Formulation:	PBS containing 0.02% sodium azide.
Concentration:	1ug/ul
Purification:	Affinity chromatography purified via peptide column
Conjugation:	Unconjugated
Storage:	Store at -20°C as received.
Stability:	Stable for 12 months from date of receipt.
Gene Name:	regulating synaptic membrane exocytosis 2
Database Link:	NP_001093587 Entrez Gene 116838 Mouse Entrez Gene 116839 Rat Entrez Gene 9699 Human Q9UQ26
Background:	Rab3-interacting molecules (RIMs) are synaptic proteins necessary for neuronal transmission and plasticity. Rim1 and Rim2 proteins are expressed in overlapping but distinct patterns throughout the brain. While the ablation of either gene was not lethal in mice, the deletion of both resulted in postnatal mortality. This lethality is due to a defect in neurotransmitter release; synapses without RIM proteins can still release neurotransmitters but are unable to do so in response to normal Ca ²⁺ triggers. Like Rim1, Rim 2 is thought to be an effector protein for Rab3, binding to Rab3 on synaptic vesicles in a GTP-dependent manner. Rim2 is known to exist in multiple isoforms; this antibody should recognize most of them. This antibody is predicted to have no cross-reactivity to other Rim proteins.



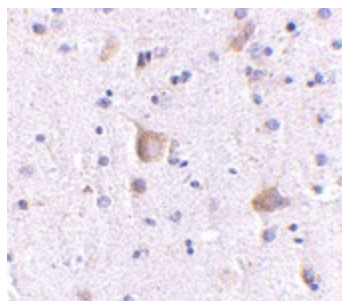
[View online »](#)

Synonyms: OBOE; RAB3IP3; RIM2

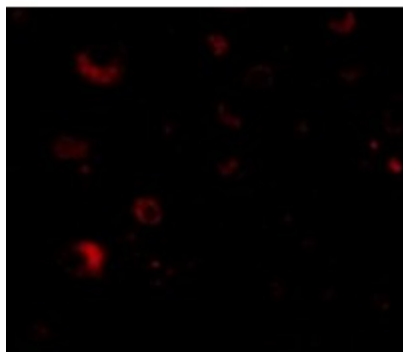
Product images:



Western blot analysis of Rim2 in rat brain tissue lysate with Rim2 antibody at 1 ug/ml in the (A) absence or (B) presence of blocking peptide.



Immunohistochemistry of Rim2 in human brain with Rim2 antibody at 5 ug/ml.



Immunofluorescence of Rim2 in Human Brain tissue with Rim2 antibody at 20 ug/mL.