

Product datasheet for **TA306575**

EVER2 (TMC8) Rabbit Polyclonal Antibody

Product data:

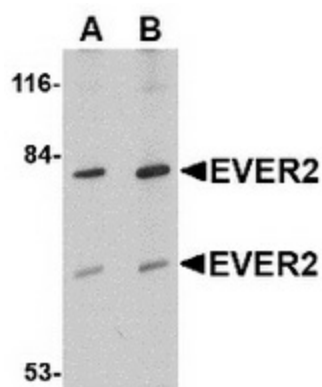
Product Type:	Primary Antibodies
Applications:	IF, IHC, WB
Recommended Dilution:	WB: 1 - 2 ug/mL, ICC: 5 ug/mL, IF: 20 ug/mL
Reactivity:	Human, Mouse, Rat
Host:	Rabbit
Isotype:	IgG
Clonality:	Polyclonal
Immunogen:	EVER2 antibody was raised against a 14 amino acid peptide from near the center of human EVER2.
Formulation:	PBS containing 0.02% sodium azide.
Concentration:	1ug/ul
Purification:	Affinity chromatography purified via peptide column
Conjugation:	Unconjugated
Storage:	Store at -20°C as received.
Stability:	Stable for 12 months from date of receipt.
Gene Name:	transmembrane channel like 8
Database Link:	AAM44454 Entrez Gene 147138 Human Q8IU68
Background:	Epidermodysplasia verruciformis (EV) is an autosomal recessive genodermatosis associated with a high risk of skin cancers resulting from a high susceptibility to infection by specific human papillomaviruses. Mutations in two homologous genes EVER1 and EVER2 cause the majority of EV cases. These two proteins form a complex and interact with the zinc transporter ZnT-1 in the endoplasmic reticulum. Cells lacking EVER2 accumulated higher levels of zinc in the nucleolus and nucleus compare to those cells with and intact EVER2 gene, indicating that one role of EVER2 is to regulate the intracellular distribution of zinc. At least three isoforms of EVER2 are known to exist; this antibody will only recognize the larger isoform. EVER2 has no cross-reactivity to EVER1.



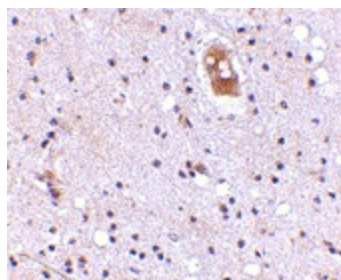
[View online »](#)

Synonyms: EV2; EVER2; EVIN2

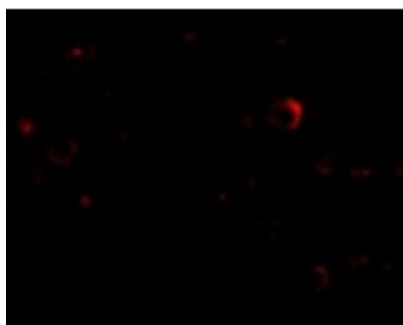
Product images:



Western blot analysis of EVER2 in Jurkat cell lysate with EVER2 antibody at (A) 1 and (B) 2 ug/ml.



Immunohistochemistry of EVER2 in human brain with EVER2 antibody at 5 ug/ml.



Immunofluorescence of EVER2 in Human Brain cells with EVER2 antibody at 20 ug/mL.