

## Product datasheet for **TA306574**

### COPS8 Rabbit Polyclonal Antibody

#### Product data:

Product Type:	Primary Antibodies
Applications:	WB
Recommended Dilution:	WB: 2 ug/mL
Reactivity:	Human, Mouse, Rat
Host:	Rabbit
Isotype:	IgG
Clonality:	Polyclonal
Immunogen:	CSN8 antibody was raised against a 15 amino acid peptide near the carboxy terminus of the human CSN8.
Formulation:	PBS containing 0.02% sodium azide.
Concentration:	1ug/ul
Purification:	Affinity chromatography purified via peptide column
Conjugation:	Unconjugated
Storage:	Store at -20°C as received.
Stability:	Stable for 12 months from date of receipt.
Gene Name:	COP9 signalosome subunit 8
Database Link:	<a href="#">NP_006701</a> <a href="#">Entrez Gene 108679 Mouse</a> <a href="#">Entrez Gene 363283 Rat</a> <a href="#">Entrez Gene 10920 Human</a> <a href="#">Q99627</a>



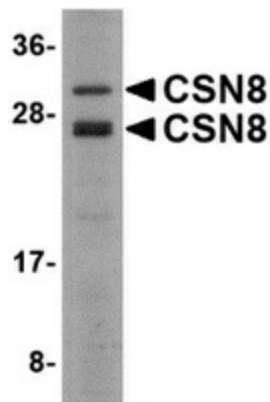
[View online »](#)

**Background:**

The COP9 signalosome (CSN) is an evolutionarily conserved protein complex of the eight subunits that interacts with deubiquitinating enzymes and protein kinases and is highly homologous to the lid sub-complex of 26S proteasome. The CSN complex is an essential regulator of the ubiquitin conjugation pathway by mediating the deneddylation of the SCF-type E3 ligase complexes, which leads to a decrease in ubiquitin ligase activity of SCF-complexes such as SCF, CSA or DDB2. It is also involved in phosphorylation of p53, c-jun/JUN, ITPK1 and IRF8/ICSBP, possibly via its association with CK2 and PKD kinases. CSN8 encodes the smallest and the least conserved but first identified subunit of CSN. Recent studies show CSN8 is essential for *Drosophila* development and is essential for peripheral T cell homeostasis and antigen receptor-induced entry into the cell cycle from quiescence.

**Synonyms:**

COP9; CSN8; SGN8

**Product images:**

Western blot analysis of CSN8 in Human liver lysate with CSN8 antibody at 2 ug/ml.