

Product datasheet for **TA306568**

GRTP1 Rabbit Polyclonal Antibody

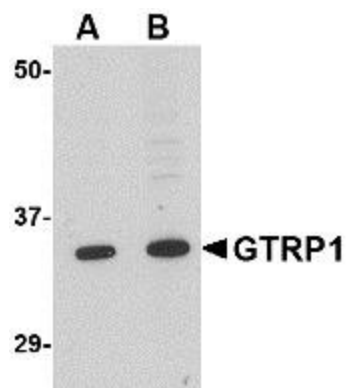
Product data:

Product Type:	Primary Antibodies
Applications:	IF, WB
Recommended Dilution:	WB: 1 - 2 ug/mL, IF: 20 ug/mL
Reactivity:	Human, Mouse, Rat
Host:	Rabbit
Isotype:	IgG
Clonality:	Polyclonal
Immunogen:	GRTP1 antibody was raised against a 18 amino acid peptide from near the amino terminus of human GRTP1.
Formulation:	PBS containing 0.02% sodium azide.
Concentration:	1ug/ul
Purification:	Affinity chromatography purified via peptide column
Conjugation:	Unconjugated
Storage:	Store at -20°C as received.
Stability:	Stable for 12 months from date of receipt.
Gene Name:	growth hormone regulated TBC protein 1
Database Link:	NP_078995 Entrez Gene 66790 Mouse Entrez Gene 361180 Rat Entrez Gene 79774 Human Q5TC63
Background:	Growth hormone regulated TBC protein 1 (GRTP1) was identified through microarray analysis as a gene whose expression is regulated by growth hormone (GH). It contains the TBC signature motif of GTPase activator proteins of Rab-like small GTPases. GRTP1 mRNA is expressed at highest levels in testes, and is also present in kidney, lung, liver, and intestine. Administration of GH to mice resulted in an increase in GRTP1 mRNA in testes, but a decrease of GRTP1 mRNA in kidney and liver. GRTP1 was identified as an HIV dependency factor (HDF), suggesting that GRTP1 may be an important drug target in HIV treatment. At least three isoforms of GRTP1 are known to exist; this antibody should recognize all isoforms.
Synonyms:	TBC1D6

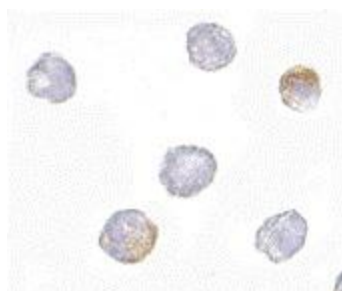


[View online »](#)

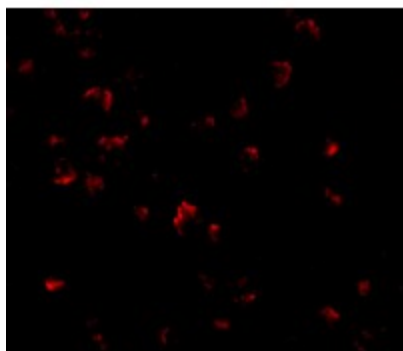
Product images:



Western blot analysis of GRTP1 in K562 cell lysate with GRTP1 antibody at (A) 1 and (B) 2 ug/mL.



Immunocytochemistry of GRTP1 in K562 cells with GRTP1 antibody at 2.5 ug/mL.



Immunofluorescence of GRTP1 in K562 cells with GRTP1 antibody at 20 ug/mL.