

**Name: Rabbit Polyclonal RGPL5 Antibody**  
**Product Data Sheet - ANTIBODY****Catalog: TA306567**

<b>Components:</b>	• Rabbit Polyclonal RGPL5 Antibody (TA306567)
<b>Amount:</b>	100ug
<b>Immunogen:</b>	RGPL5 antibody was raised against a 23 amino acid peptide from near the center of human RGPL5.
<b>Host:</b>	Rabbit
<b>Isotype:</b>	IgG
<b>Species Reactivity:</b>	Human
<b>Guaranteed Applications:</b>	WB
<b>Suggested Dilutions:</b>	WB: 1 ug/mL
<b>Concentration:</b>	1ug/ul
<b>Buffer:</b>	PBS containing 0.02% sodium azide.
<b>Purification:</b>	Affinity chromatography purified via peptide column
<b>Storage Condition:</b>	Shipped at -20C or with ice packs. Upon delivery store at -20C. Dilute in PBS (pH7.3) if necessary. Stable for 12 months from date of receipt. Avoid repeated freeze-thaws.

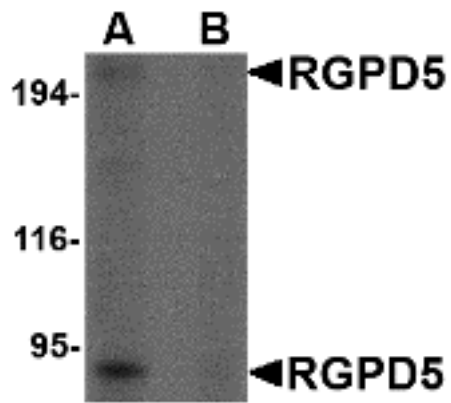
## Target

<b>Target Name:</b>	RANBP2-like and GRIP domain containing 5
<b>Alternative Name:</b>	BS-63 BS63 HEL161 RGP5
<b>Database Link:</b>	<a href="#">NP_005045</a> <a href="#">Entrez Gene 84220 Human</a>
<b>Function:</b>	The RANBP2-like and GRIP domain containing 5 protein (RGPL5) has high similarity to RANBP2, a large RAN-binding protein localized at the cytoplasmic side of the nuclear pore complex. The gene coding for RGPL5 is thought to have arisen from a gene duplication event of RANBP2 as these highly homologous genes are located close to each other at chromosome 2q11-q12. RGPL5 was identified as an HIV dependency factor (HDF), suggesting that RGPL5 may be an important drug target in HIV treatment. At least two isoforms of RGPL5 are known to exist, of which the shorter isoform is expressed primarily in testis, while the longer of the two is expressed at low levels in a number of somatic tissues.

***This product is to be used for laboratory only. Not for diagnostic or therapeutic use.***

## Validation Data

---



\* More validation images may be available on our website: <http://www.origene.com/antibody/TA306567.aspx>

---

***This product is to be used for laboratory only. Not for diagnostic or therapeutic use.***

© 2017 OriGene Technologies, Inc. 9620 Medical Center Dr., Suite 200, Rockville, MD 20850

---