

## Product datasheet for **TA306566**

### **RGPD5 Rabbit Polyclonal Antibody**

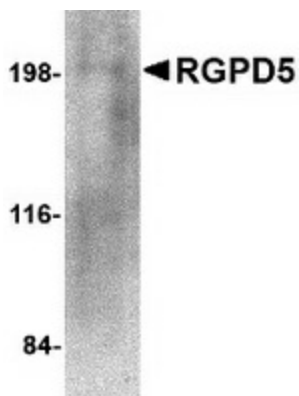
#### **Product data:**

Product Type:	Primary Antibodies
Applications:	IF, IHC, WB
Recommended Dilution:	WB: 1 ug/mL, ICC: 10 ug/mL, IF: 20 ug/mL
Reactivity:	Human
Host:	Rabbit
Isotype:	IgG
Clonality:	Polyclonal
Immunogen:	RGPD5 antibody was raised against a 13 amino acid peptide from near the amino terminus of human RGPD5.
Formulation:	PBS containing 0.02% sodium azide.
Concentration:	1ug/ul
Purification:	Affinity chromatography purified via peptide column
Conjugation:	Unconjugated
Storage:	Store at -20°C as received.
Stability:	Stable for 12 months from date of receipt.
Gene Name:	RANBP2-like and GRIP domain containing 5
Database Link:	<a href="#">NP_005045</a> <a href="#">Entrez Gene 84220 Human</a> <a href="#">Q99666</a>
Background:	The RANBP2-like and GRIP domain containing 5 protein (RGPD5) has high similarity to RANBP2, a large RAN-binding protein localized at the cytoplasmic side of the nuclear pore complex. The gene coding for RGPD5 is thought to have arisen from a gene duplication event of RANBP2 as these highly homologous genes are located close to each other at chromosome 2q11-q12. RGPD5 was identified as an HIV dependency factor (HDF), suggesting that RGPD5 may be an important drug target in HIV treatment. At least two isoforms of RGPD5 are known to exist, of which the shorter isoform is expressed primarily in testis, while the longer of the two is expressed at low levels in a number of somatic tissues.
Synonyms:	BS-63; BS63; HEL161; RGP5

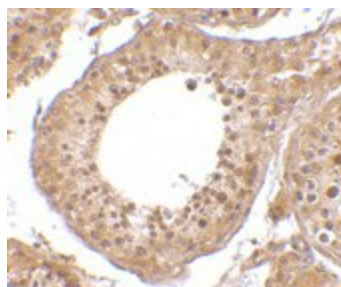

[View online »](#)

Protein Families: Druggable Genome

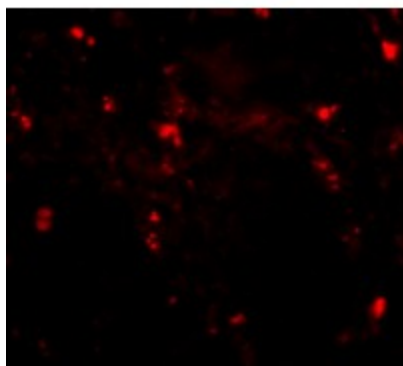
## Product images:



Western blot analysis of RGPD5 in human thymus tissue lysate with RGPD5 antibody at 1 ug/ml.



Immunohistochemistry of RGPD5 in human testis tissue cells with RGPD5 antibody at 10 ug/ml.



Immunofluorescence of RGPD5 in human testis tissue with RGPD5 antibody at 20 ug/mL.