

Product datasheet for **TA306565**

NPTX2 Rabbit Polyclonal Antibody

Product data:

Product Type:	Primary Antibodies
Applications:	IF, IHC, WB
Recommended Dilution:	WB: 0.5 and 1 ug/mL, ICC: 5 ug/mL, IF: 20 ug/mL
Reactivity:	Human, Mouse, Rat
Host:	Rabbit
Isotype:	IgG
Clonality:	Polyclonal
Immunogen:	NPTX2 antibody was raised against a 16 amino acid synthetic peptide near the center of the human NPTX2. The immunogen is located within amino acids 170 - 220 of NPTX2.
Formulation:	PBS containing 0.02% sodium azide.
Concentration:	lot specific
Purification:	Affinity chromatography purified via peptide column
Conjugation:	Unconjugated
Storage:	Antibody can be stored at 4°C up to one year. Antibodies should not be exposed to prolonged high temperatures.
Stability:	Stable for 12 months from date of receipt.
Gene Name:	neuronal pentraxin 2
Database Link:	NP_002514 Entrez Gene 53324 Mouse Entrez Gene 288475 Rat Entrez Gene 4885 Human P47972



[View online »](#)

Background:

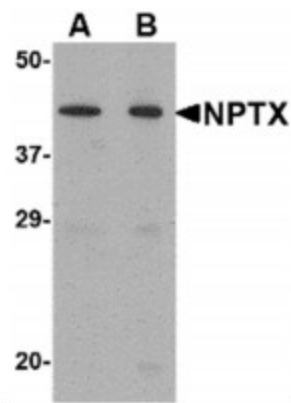
Neuronal pentraxin (NPTX) 2 was initially identified as a member of the pentraxin family having high homology to NPTX1. Unlike NPTX1 however, NPTX2 is expressed in testes, pancreas, liver, heart, skeletal muscle as well as brain. NPTX2 possesses the lectin properties common to the pentraxin family, promotes neurite outgrowth, and is rapidly regulated by neuronal activity. NPTX1 and NPTX2 form heterocomplexes that contribute to both activity-independent and -dependent excitatory synaptogenesis. Recently, NPTX2 has been found to be highly upregulated in Parkinsonian substantia nigra and localizes to Lewy bodies and Lewy neurites in sporadic Parkinson's disease (PD), suggesting that it is involved in the pathway dysregulation that underlies PD. This NPTX2 antibody is predicted to be specific to NPTX2 and not recognize NPTX1.

Synonyms:

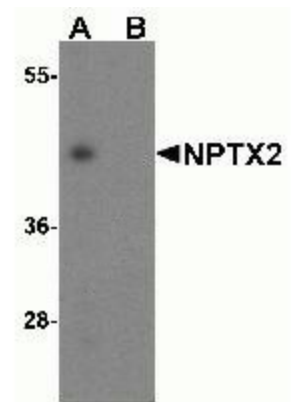
NARP; NP-II; NP2

Protein Families:

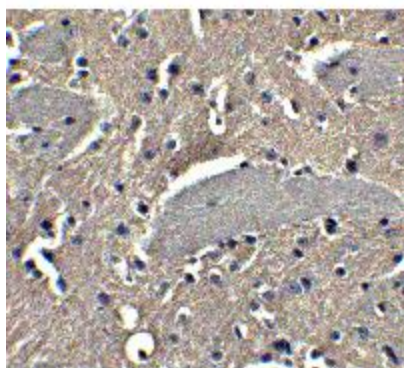
Secreted Protein

Product images:


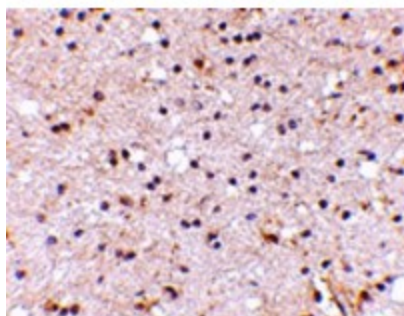
Western blot analysis of NPTX2 in mouse brain tissue lysate with NPTX2 antibody at (A) 0.5 and (B) 1ug/ml.



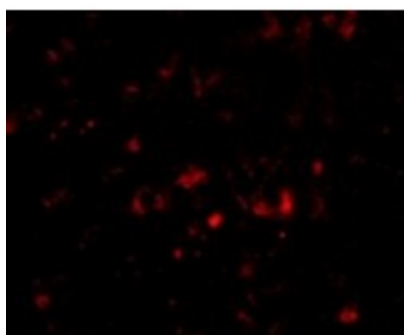
Western blot analysis of NPTX2 expression in mouse brain tissue lysate with NPTX2 antibody at 1ug/ml in (A) the absence and (B) the presence of blocking peptide.



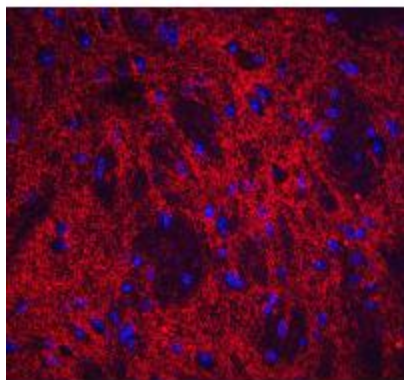
Immunocytochemistry of NPTX2 in mouse brain tissue with NPTX2 antibody at 5ug/ml.



Immunohistochemistry of NPTX2 in human brain with NPTX2 antibody at 5ug/ml.



Immunofluorescence of NPTX2 in Human Brain cells with NPTX2 antibody at 20ug/ml.



Immunofluorescence of NPTX2 in mouse brain tissue with NPTX2 antibody at 20ug/ml.