

## Product datasheet for **TA306564**

### ELOVL6 Rabbit Polyclonal Antibody

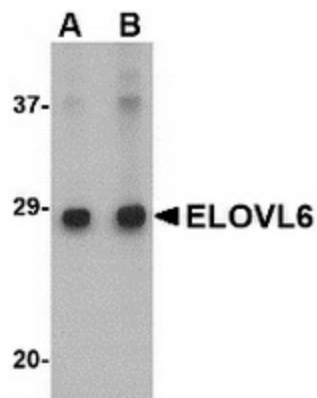
#### Product data:

Product Type:	Primary Antibodies
Applications:	IF, IHC, WB
Recommended Dilution:	WB: 1 - 2 ug/mL, ICC: 5 ug/mL, IF: 20 ug/mL
Reactivity:	Human, Mouse, Rat
Host:	Rabbit
Isotype:	IgG
Clonality:	Polyclonal
Immunogen:	ELOVL6 antibody was raised against a 16 amino acid peptide near the amino terminus of the human ELOVL6.
Formulation:	PBS containing 0.02% sodium azide.
Concentration:	1ug/ul
Purification:	Affinity chromatography purified via peptide column
Conjugation:	Unconjugated
Storage:	Store at -20°C as received.
Stability:	Stable for 12 months from date of receipt.
Gene Name:	ELOVL fatty acid elongase 6
Database Link:	<a href="#">NP_076995</a> <a href="#">Entrez Gene 79071 Human</a> <a href="#">Q9H5J4</a>
Background:	Lipogenesis is a key event in the energy storage system and is controlled by the transcription factor sterol regulatory element-binding protein (SREBP)-1. Elongation of very long chain fatty acids protein 6 (ELOVL6) is a member of fatty acyl-CoA elongase gene family that converts palmitic to stearic acid and it has been shown to be a target of SREBP-1, playing an important role in de novo synthesis of long-chain saturated and monosaturated fatty acids in conjunction with fatty acid synthase and stearyl-CoA desaturase ELOVL6 was predicted to be important for tissue fatty acid composition. Recent studies suggest that inhibition of this elongase could be a new therapeutic approach for ameliorating insulin resistance, diabetes and cardiovascular risks, even in the presence of a continuing state of obesity.

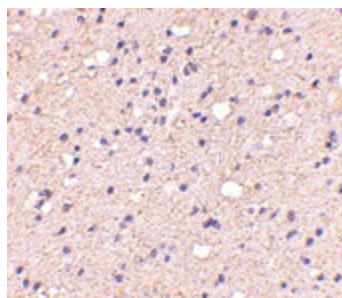
[View online »](#)

Synonyms: FACE; FAE; LCE

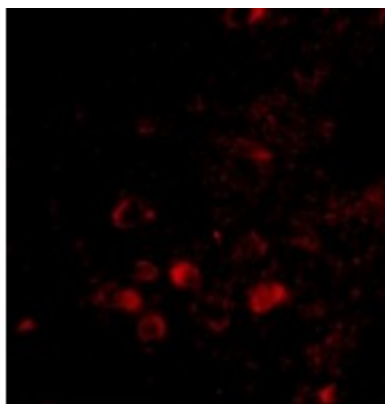
## Product images:



Western blot analysis of ELOVL6 in Human brain tissue lysate with ELOVL6 antibody at (A) 1 and (B) 2 ug/ml.



Immunohistochemistry of ELOVL6 in human brain with ELOVL6 antibody at 5 ug/ml.



Immunofluorescence of ELOVL6 in Human Brain tissue with ELOVL6 antibody at 20 ug/mL.