

Product datasheet for **TA306563**

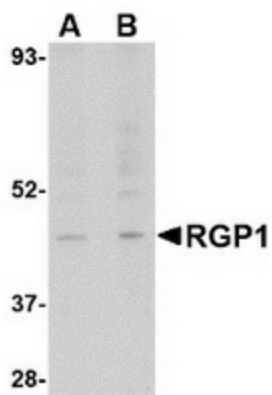
RGP1 Rabbit Polyclonal Antibody

Product data:

Product Type:	Primary Antibodies
Applications:	WB
Recommended Dilution:	WB: 1 - 2 ug/mL
Reactivity:	Human, Mouse, Rat
Host:	Rabbit
Isotype:	IgG
Clonality:	Polyclonal
Immunogen:	RGP1 antibody was raised against a 17 amino acid peptide near the amino terminus of the human RGP1.
Formulation:	PBS containing 0.02% sodium azide.
Concentration:	1ug/ul
Purification:	Affinity chromatography purified via peptide column
Conjugation:	Unconjugated
Storage:	Store at -20°C as received.
Stability:	Stable for 12 months from date of receipt.
Gene Name:	RGP1 homolog, RAB6A GEF complex partner 1
Database Link:	NP_001073965 Entrez Gene 242406 Mouse Entrez Gene 313493 Rat Entrez Gene 9827 Human Q92546
Background:	Retrograde golgi transport homolog 1 (RGP1) is the mammalian homolog to the yeast RGP1, a protein that forms a tight complex with RIC1. This complex binds Ypt6p and stimulates guanine nucleotide exchange. RGP1 is localized to the Golgi and is thought to be a potential Golgi recycling factor. Rgp1 yeast mutants exhibit defects in retrograde trafficking similar to those seen in yeast with mutations in other retrograde Golgi transport proteins. It is expected that RGP1 plays a similar role in mammalian cells to that seen in yeast.
Synonyms:	KIAA0258



[View online »](#)

Product images:


Western blot analysis of RGP1 in human heart tissue lysate with RGP1 antibody at (A) 1 and (B) 2 ug/ml.