

Product datasheet for **TA306562**

CADPS2 Rabbit Polyclonal Antibody

Product data:

Product Type:	Primary Antibodies
Applications:	IF, IHC, WB
Recommended Dilution:	WB: 0.5 - 1 ug/mL, ICC: 5 ug/mL, IF: 20 ug/mL
Reactivity:	Human, Mouse, Rat
Host:	Rabbit
Isotype:	IgG
Clonality:	Polyclonal
Immunogen:	CAPS2 antibody was raised against a 19 amino acid peptide near the center of the human CAPS2.
Formulation:	PBS containing 0.02% sodium azide.
Concentration:	1ug/ul
Purification:	Affinity chromatography purified via peptide column
Conjugation:	Unconjugated
Storage:	Store at -20°C as received.
Stability:	Stable for 12 months from date of receipt.
Gene Name:	Ca ²⁺ dependent secretion activator 2
Database Link:	NP_060424 Entrez Gene 93664 Human Q86UW7



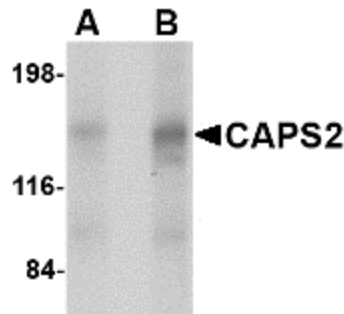
[View online »](#)

Background:

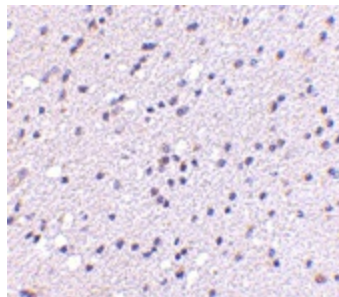
CAPS2 and the related protein CAPS1 encode novel neural/endocrine-specific cytosolic and peripheral membrane proteins. Both are essential components of the synaptic vesicle priming machinery and are required for the Ca²⁺-regulated exocytosis of secretory vesicles; CAPS-deficient neurons contain no or very few fusion competent synaptic vesicles, causing a selective impairment of fast phasic transmitter release. Like CAPS1, numerous isoforms of CAPS2 are known to exist. These isoforms show distinct expression patterns in the brain. For example, CAPS2b showed high expression in the developing cerebellum. Furthermore, one version of CAPS2 mRNA that lacks exon 3 is detected in some autistic patients, suggesting that the differential expression pattern of CAPS2 is involved in neuronal development. This CAPS2 antibody is predicted to be specific to CAPS2 and not recognize CAPS1.

Synonyms:

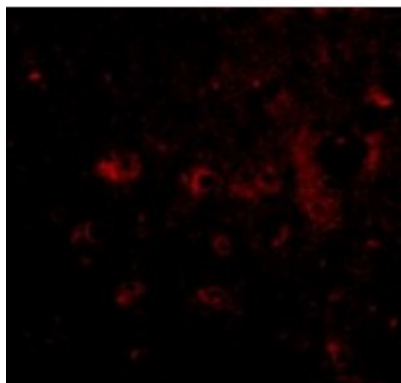
FLJ40851; KIAA1591

Product images:


Western blot analysis of CAPS2 in human brain tissue lysate with CAPS2 antibody at (A) 0.5 and (B) 1 ug/ml.



Immunohistochemistry of CAPS2 in human brain with CAPS2 antibody at 5 ug/ml.



Immunofluorescence of CAPS2 in Human Brain tissue with CAPS2 antibody at 20 ug/mL.