

## Product datasheet for **TA306553**

### IRGM Rabbit Polyclonal Antibody

#### Product data:

Product Type:	Primary Antibodies
Applications:	IF, IHC, WB
Recommended Dilution:	WB: 1 - 2 ug/mL, ICC: 5 ug/mL, IF: 20 ug/mL
Reactivity:	Human, Mouse, Rat
Host:	Rabbit
Isotype:	IgG
Clonality:	Polyclonal
Immunogen:	IRGM antibody was raised against a 14 amino acid peptide near the center of the human IRGM.
Formulation:	PBS containing 0.02% sodium azide.
Concentration:	1ug/ul
Purification:	Affinity chromatography purified via peptide column
Conjugation:	Unconjugated
Storage:	Store at -20°C as received.
Stability:	Stable for 12 months from date of receipt.
Gene Name:	immunity-related GTPase M
Database Link:	<a href="#">AAI28169</a> <a href="#">Entrez Gene 345611 Human</a> <a href="#">A1A4Y4</a>



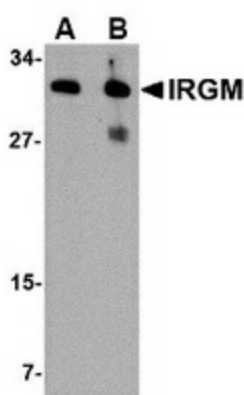
[View online »](#)

**Background:**

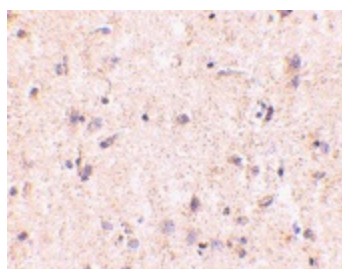
Autophagy, the process of bulk degradation of cellular proteins through an autophagosomal-lysosomal pathway is important for normal growth control and may be defective in tumor cells. It is involved in the preservation of cellular nutrients under starvation conditions as well as the normal turnover of cytosolic components. Two of the strongest hits implicate genes IRGM and ATG16L1, which encode proteins thought to be critical to the autophagy pathway and being significantly associated with Crohn's disease. In mouse, IRGM belongs to a family of gamma-interferon-induced GTP-binding proteins of approximately 48 kDa. Murine IRGM induces autophagy and generates large autolysosomal organelles as a mechanism for the elimination of intracellular Mycobacterium tuberculosis. Human IRGM is also involved in autophagy and plays a role in the control of intracellular pathogens and in the reduction of intracellular bacillary load.

**Synonyms:**

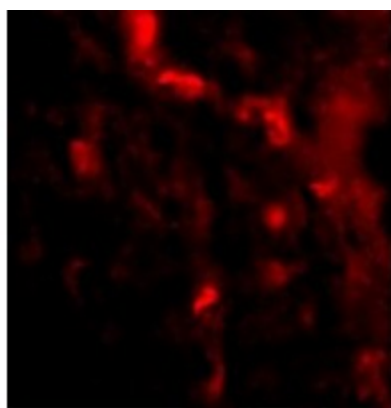
IFI1; IRGM1; LRG-47; LRG47

**Product images:**

Western blot analysis of IRGM in human brain lysate with IRGM antibody at (A) 1 and (B) 2 ug/ml.



Immunohistochemistry of IRGM in human brain with IRGM antibody at 5 ug/ml.



Immunofluorescence of IRGM in Human Brain tissue with IRGM antibody at 20 ug/mL.