

## Product datasheet for **TA306549**

### **NIPSNAP1 Rabbit Polyclonal Antibody**

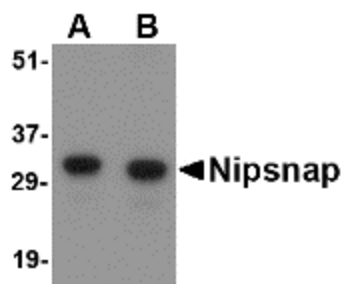
#### **Product data:**

Product Type:	Primary Antibodies
Applications:	IF, IHC, WB
Recommended Dilution:	WB: 0.5 - 1 ug/mL, ICC: 2.5 ug/mL, IF: 20 ug/mL
Reactivity:	Human, Mouse, Rat
Host:	Rabbit
Isotype:	IgG
Clonality:	Polyclonal
Immunogen:	NIPSNAP antibody was raised against a 19 amino acid peptide from near the center of human NIPSNAP.
Formulation:	PBS containing 0.02% sodium azide.
Concentration:	1ug/ul
Purification:	Affinity chromatography purified via peptide column
Conjugation:	Unconjugated
Storage:	Store at -20°C as received.
Stability:	Stable for 12 months from date of receipt.
Gene Name:	nipsnap homolog 1 (C. elegans)
Database Link:	<a href="#">NP_003625</a> <a href="#">Entrez Gene 18082 Mouse</a> <a href="#">Entrez Gene 360971 Rat</a> <a href="#">Entrez Gene 8508 Human</a> <a href="#">Q9BPW8</a>
Background:	NIPSNAP is a member of an evolutionarily well conserved gene family and has a strong sequence similarity to the central portion of a protein encoded by C. elegans chromosome III between a 4-nitrophenylphosphatase (NIP) domain and non-neuronal SNAP25-like protein. Recent studies have indicated that NIPSNAP is involved in the regulation of the Ca <sup>2+</sup> -selective transient receptor potential vanilloid channel 6 (TRPV6). NIPSNAP1 associates with TRPV6 at the plasma membrane and inhibits TRPV6 currents. Other studies show that NIPSNAP's expression is reduced in the phenylketonuria (PKU) mouse brain, suggesting that NIPSNAP may play a role in memory.
Synonyms:	C. elegans; NIPSNAP

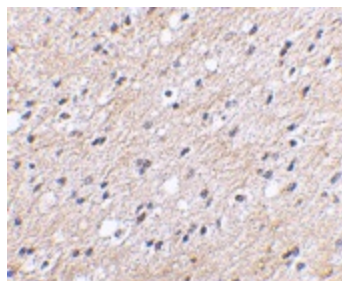


[View online »](#)

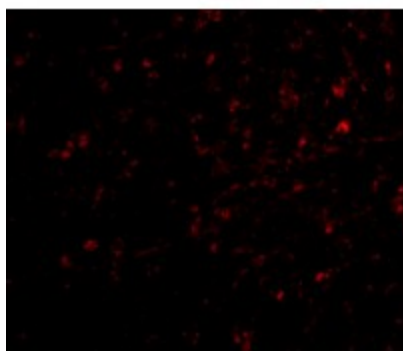
## Product images:



Western blot analysis of NIPSNAP in human brain tissue lysate with NIPSNAP antibody at (A) 0.5 and (B) 1 ug/ml.



Immunohistochemical staining of human brain tissue using Nipsnap antibody at 2.5 ug/ml.



Immunofluorescence of nipsnap in human brain tissue with nipsnap antibody at 20 ug/mL.