

## Product datasheet for **TA306547**

### Lgi2 Rabbit Polyclonal Antibody

#### Product data:

Product Type:	Primary Antibodies
Applications:	IF, IHC, WB
Recommended Dilution:	WB: 1 - 2 ug/mL, ICC: 2.5 ug/mL, IF: 5 ug/mL
Reactivity:	Human, Mouse
Host:	Rabbit
Isotype:	IgG
Clonality:	Polyclonal
Immunogen:	LGI2 antibody was raised against a 10 amino acid peptide from near the center of human LGI2.
Formulation:	PBS containing 0.02% sodium azide.
Concentration:	1ug/ul
Purification:	Affinity chromatography purified via peptide column
Conjugation:	Unconjugated
Storage:	Store at -20°C as received.
Stability:	Stable for 12 months from date of receipt.
Gene Name:	leucine-rich repeat LGI family, member 2
Database Link:	<a href="#">NP_060646</a> <a href="#">Entrez Gene 246316 Mouse</a> <a href="#">Q8K4Z0</a>



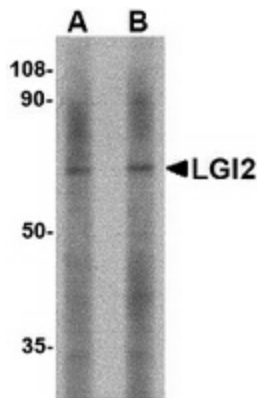
[View online »](#)

**Background:**

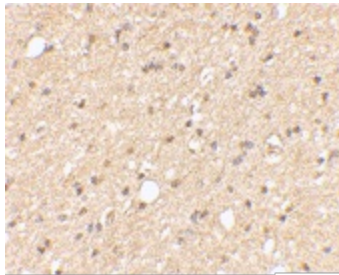
The leucine-rich, glioma inactivated gene 2 (LGI2) is a member of the LGI family in which LGI1 is the exemplar. The LGI family consists of four of highly related proteins containing leucine-rich repeats (LRRs) which are highly similar to other transmembrane signaling molecules and receptors. LGI1 has been identified as a candidate tumor suppressor gene for glioma and plays a role in autodominate lateral temporal epilepsy (ADTLE), an epileptic syndrome characterized by focal seizures with predominant auditory symptoms. Despite its high homology with LGI1 and similar pattern of expression, mutations in LGI2 have not been found to be associated with ADTLE. Three isoforms of LGI2 are known to exist; this LGI2 antibody will recognize only the longest. This LGI2 antibody is predicted to be specific to LGI2 and not recognize other LGI proteins.

**Synonyms:**

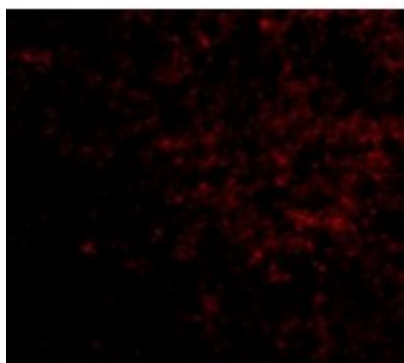
LGIL2

**Product images:**

Western blot analysis of LGI2 in mouse liver tissue lysate with LGI2 antibody at (A) 1 and (B) 2 ug/ml.



Immunohistochemical staining of human brain tissue using LGI2 antibody at 2.5 ug/ml.



Immunofluorescence of LGI2 in Human Brain cells with LGI2 antibody at 5 ug/mL.