

Product datasheet for **TA306546**

LGI1 Rabbit Polyclonal Antibody

Product data:

Product Type:	Primary Antibodies
Applications:	WB
Recommended Dilution:	WB: 1 ug/mL
Reactivity:	Human, Mouse, Rat
Host:	Rabbit
Isotype:	IgG
Clonality:	Polyclonal
Immunogen:	LGI1 antibody was raised against a 13 amino acid peptide from near the amino terminus of human LGI1.
Formulation:	PBS containing 0.02% sodium azide.
Concentration:	1ug/ul
Purification:	Affinity chromatography purified via peptide column
Conjugation:	Unconjugated
Storage:	Store at -20°C as received.
Stability:	Stable for 12 months from date of receipt.
Gene Name:	leucine-rich, glioma inactivated 1
Database Link:	AAQ89244 Entrez Gene 9211 Human O95970

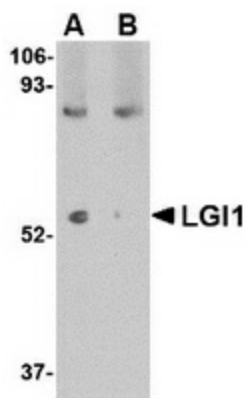
Background: The leucine-rich, glioma inactivated gene 1 (LGI1) was first identified as a candidate tumor suppressor gene for glioma and may play a role in other cancers. LGI1 is a member of a family of highly related proteins containing leucine-rich repeats (LRRs) which are highly similar to other transmembrane signaling molecules and receptors. LGI1 serves as a ligand to ADAM22, a metalloprotease localized at the synapse. Mutations in LGI1 account for nearly half of autodominant lateral temporal epilepsy (ADTLE), an epileptic syndrome characterized by focal seizures with predominant auditory symptoms. Two isoforms of LGI1 are known to exist, but the top band seen in the western blot is likely to be non-specific. This LGI1 antibody is predicted to be specific to LGI1 and not recognize other LGI proteins.



[View online »](#)

Synonyms: ADLTE; ADPAEF; ADPEAF; EPITEMPIN; EPT; ETL1; IB1099

Product images:



Western blot analysis of LGI1 in mouse brain tissue lysate with LGI1 antibody at 1 ug/ml in (A) the absence and (B) the presence of blocking peptide.