

Product datasheet for **TA306544**

LGI4 Rabbit Polyclonal Antibody

Product data:

Product Type:	Primary Antibodies
Applications:	WB
Recommended Dilution:	WB: 1 - 2 ug/mL
Reactivity:	Human, Mouse, Rat
Host:	Rabbit
Isotype:	IgG
Clonality:	Polyclonal
Immunogen:	LGI4 antibody was raised against a 17 amino acid peptide from near the carboxy terminus of human LGI4.
Formulation:	PBS containing 0.02% sodium azide.
Concentration:	1ug/ul
Purification:	Affinity chromatography purified via peptide column
Conjugation:	Unconjugated
Storage:	Store at -20°C as received.
Stability:	Stable for 12 months from date of receipt.
Gene Name:	leucine-rich repeat LGI family member 4
Database Link:	AAM49552 Entrez Gene 163175 Human Q8N135



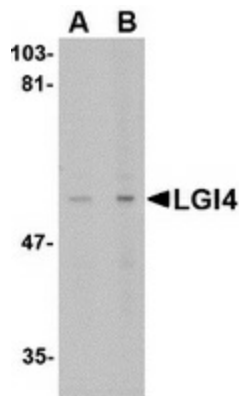
[View online »](#)

Background:

The leucine-rich, glioma inactivated gene 4 (LGI4) is a member of the LGI family in which LGI1 is the exemplar. The LGI family consists of four of highly related proteins containing leucine-rich repeats (LRRs) which are highly similar to other transmembrane signaling molecules and receptors. LGI1 has been identified as a candidate tumor suppressor gene for glioma and plays a role in autodominate lateral temporal epilepsy (ADTLE), an epileptic syndrome characterized by focal seizures with predominant auditory symptoms. Despite its high homology with LGI1 and similar pattern of expression, mutations in LGI4 have not been found to be associated with ADTLE. However, the LGI4 gene is located in a region linked to benign familial infantile convulsions. Further study revealed that a GC-to-AT polymorphism was correlated with childhood absence epilepsy. Other studies showed that decreasing LGI4 expression in cultured cells inhibits myelination, indicating that LGI4 may play a role in neural development. Two isoforms of LGI4 are known to exist; this LGI4 antibody will recognize only the larger form. This LGI4 antibody is predicted to be specific to LGI4 and not recognize other LGI proteins.

Synonyms:

LGIL3

Product images:

Western blot analysis of LGI4 in rat brain tissue lysate with LGI4 antibody at (A) 1 and (B) 2 ug/ml.