

## Product datasheet for **TA306540**

### HAPLN2 Rabbit Polyclonal Antibody

#### Product data:

Product Type:	Primary Antibodies
Applications:	IF, IHC, WB
Recommended Dilution:	WB: 1 - 2 ug/mL, ICC: 2.5 ug/mL, IF: 20 ug/mL
Reactivity:	Human, Mouse, Rat
Host:	Rabbit
Isotype:	IgG
Clonality:	Polyclonal
Immunogen:	BRAL1 antibody was raised against a 12 amino acid peptide from near the center of human BRAL1.
Formulation:	PBS containing 0.02% sodium azide.
Concentration:	1ug/ul
Purification:	Affinity chromatography purified via peptide column
Conjugation:	Unconjugated
Storage:	Antibody can be stored at 4°C up to one year. Antibodies should not be exposed to prolonged high temperatures.
Stability:	Stable for 12 months from date of receipt.
Gene Name:	hyaluronan and proteoglycan link protein 2
Database Link:	<a href="#">NP_068589</a> <a href="#">Entrez Gene 64057 Rat</a> <a href="#">Entrez Gene 73940 Mouse</a> <a href="#">Entrez Gene 60484 Human</a> <a href="#">Q9GZV7</a>



[View online »](#)

**Background:**

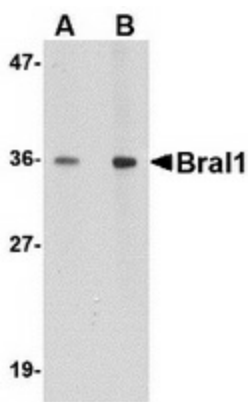
BRAL1 is a member a superfamily consisting of several highly homologous hyaluronan and proteoglycan binding link proteins. BRAL1 is predominantly expressed in brain tissue and spinal cord. Like other members in the link-module superfamily, BRAL1 contains an immunoglobulin-like fold and two proteoglycan tandem repeats (PTRs). Its mRNA expression pattern is similar to other lectican proteoglycans, suggesting that BRAL1 may act to stabilize the binding between the extracellular matrix molecule hyaluronan and brevican. Immunostaining of mouse brain showed BRAL1 expression at P20 in the white matter of the developing cerebellum and in myelinated fiber tracts in the adult brain, suggesting that expression starts when axonal myelination occurs.

**Synonyms:**

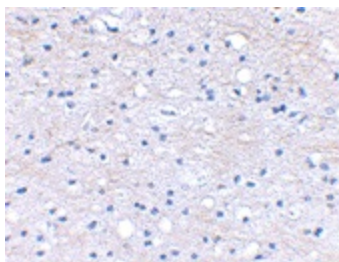
BRAL1

**Protein Families:**

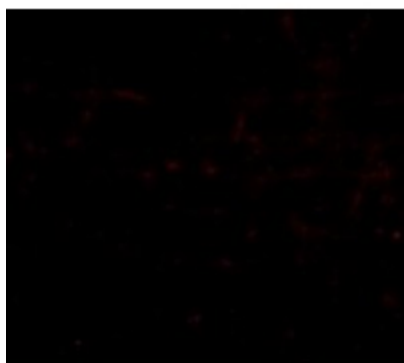
Secreted Protein

**Product images:**

Western blot analysis of BRAL1 in human brain tissue lysate with BRAL1 antibody at (A) 1 and (B) 2 ug/ml.



Immunohistochemical staining of human brain tissue using BRAL1 antibody at 2.5 ug/ml.



Immunofluorescence of BRAL1 in Human Brain cells with BRAL1 antibody at 20 ug/mL.