

Product datasheet for **TA306538**

LGI3 Rabbit Polyclonal Antibody

Product data:

Product Type:	Primary Antibodies
Applications:	WB
Recommended Dilution:	WB: 1 ug/mL
Reactivity:	Human, Mouse, Rat
Host:	Rabbit
Isotype:	IgG
Clonality:	Polyclonal
Immunogen:	LGI3 antibody was raised against a 12 amino acid synthetic peptide from near the center of human LGI3. The immunogen is located within amino acids 390 - 440 of LGI3.
Formulation:	State: Liquid Buffer: PBS containing 0.02% sodium azide.
Concentration:	1 mg/ml
Purification:	Affinity chromatography purified via peptide column
Conjugation:	Unconjugated
Storage:	Store at -20°C as received.
Stability:	Stable for 12 months from date of receipt.
Gene Name:	leucine-rich repeat LGI family member 3
Database Link:	AAQ88483 Entrez Gene 203190 Human Q8N145



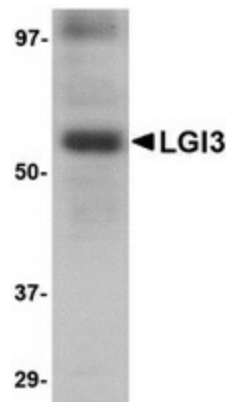
[View online »](#)

Background:

The leucine-rich, glioma inactivated gene 3 (LGI3) is a member of the LGI family in which LGI1 is the exemplar. The LGI family consists of four of highly related proteins containing leucine-rich repeats (LRRs) which are highly similar to other transmembrane signaling molecules and receptors. LGI1 has been identified as a candidate tumor suppressor gene for glioma and plays a role in autodominate lateral temporal epilepsy (ADTLE), an epileptic syndrome characterized by focal seizures with predominant auditory symptoms. Despite its high homology with LGI1 and similar pattern of expression, mutations in LGI3 have not been found to be associated with ADTLE. LGI3 expression is induced in rat astrocyte cultures by the amyloid beta (Ab) peptide and accumulated on neuronal plasma membranes of aged monkey brains and co-localized with Ab. Two isoforms of LGI3 are known to exist; this LGI3 antibody will recognize both. This LGI3 antibody is predicted to be specific to LGI3 and not recognize other LGI proteins. The observed higher molecular weight band may represent a post-translationally modified form of LGI3.

Synonyms:

LGIL4

Product images:


Western blot analysis of LGI3 in human brain tissue lysate with LGI3 antibody at 1 ug/ml.