

## Product datasheet for **TA306536**

### LGI1 Rabbit Polyclonal Antibody

#### Product data:

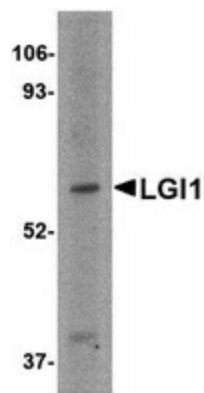
Product Type:	Primary Antibodies
Applications:	IF, IHC, WB
Recommended Dilution:	WB: 2 ug/mL, ICC: 2.5 ug/mL, IF: 20 ug/mL
Reactivity:	Human, Mouse, Rat
Host:	Rabbit
Isotype:	IgG
Clonality:	Polyclonal
Immunogen:	LGI1 antibody was raised against a 14 amino acid peptide from near the center of human LGI1.
Formulation:	PBS containing 0.02% sodium azide.
Concentration:	1ug/ul
Purification:	Affinity chromatography purified via peptide column
Conjugation:	Unconjugated
Storage:	Store at -20°C as received.
Stability:	Stable for 12 months from date of receipt.
Gene Name:	leucine-rich, glioma inactivated 1
Database Link:	<a href="#">AAQ89244</a> <a href="#">Entrez Gene 9211 Human O95970</a>
Background:	The leucine-rich, glioma inactivated gene 1 (LGI1) was first identified as a candidate tumor suppressor gene for glioma and may play a role in other cancers. LGI1 is a member of a family of highly related proteins containing leucine-rich repeats (LRRs) which are highly similar to other transmembrane signaling molecules and receptors. LGI1 serves as a ligand to ADAM22, a metalloprotease localized at the synapse. Mutations in LGI1 account for nearly half of autodominant lateral temporal epilepsy (ADTLE), an epileptic syndrome characterized by focal seizures with predominant auditory symptoms. Two isoforms of LGI1 are known to exist; this LGI1 antibody will recognize only the longer form. This LGI1 antibody is predicted to be specific to LGI1 and not recognize other LGI proteins.



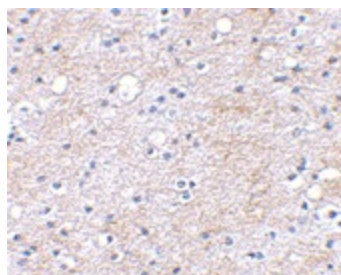
[View online »](#)

Synonyms: ADLTE; ADPAEF; ADPEAF; EPITEMPIN; EPT; ETL1; IB1099

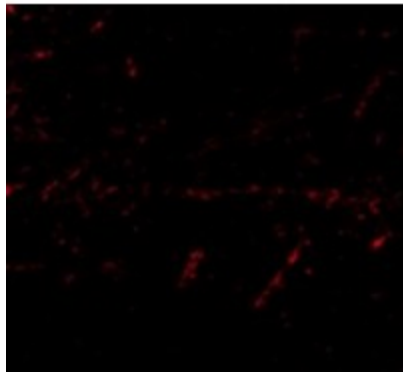
### Product images:



Western blot analysis of LGI1 in HeLa cell lysate with LGI1 antibody at 2 ug/ml.



Immunohistochemical staining of human brain tissue using LGI1 antibody at 2.5 ug/ml.



Immunofluorescence of LGI1 in Human Brain cells with LGI1 antibody at 20 ug/mL.