

Product datasheet for **TA306535**

SIRT2 Rabbit Polyclonal Antibody

Product data:

Product Type:	Primary Antibodies
Applications:	IF, IHC, WB
Recommended Dilution:	WB: 2.5 - 5 ug/mL, ICC: 2.5 ug/mL, IF: 20 ug/mL
Reactivity:	Human, Mouse, Rat
Host:	Rabbit
Isotype:	IgG
Clonality:	Polyclonal
Immunogen:	SIRT2 antibody was raised against a 17 amino acid peptide near the amino terminus of the human SIRT2.
Formulation:	PBS containing 0.02% sodium azide.
Concentration:	1ug/ul
Purification:	Affinity chromatography purified via peptide column
Conjugation:	Unconjugated
Storage:	Store at -20°C as received.
Stability:	Stable for 12 months from date of receipt.
Gene Name:	sirtuin 2
Database Link:	NP_036369 Entrez Gene 64383 Mouse Entrez Gene 361532 Rat Entrez Gene 22933 Human Q8IXJ6



[View online »](#)

Background:

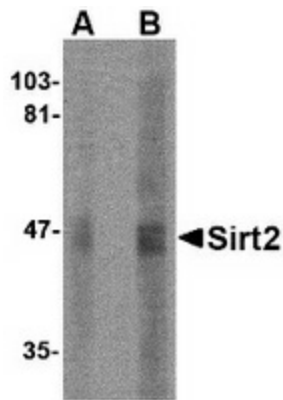
Autophagy, the process of bulk degradation of cellular proteins through an autophagosomal-lysosomal pathway is important for normal growth control and may be defective in tumor cells. It is involved in the preservation of cellular nutrients under starvation conditions as well as the normal turnover of cytosolic components. This process is negatively regulated by TOR (Target of rapamycin) through phosphorylation of autophagy protein APG1. ATG16, another member of the autophagy protein family, forms a complex with the ATG5-ATG12 conjugate. This multimeric protein has been shown to be essential for autophagosome formation in both yeast and mammals and targets the ATG5-ATG12 complex to the autophagic isolation membrane during the formation of the autophagosome. Because mammalian ATG16 has seven WD-repeats in its C-terminal domain, it has been suggested that these may form a platform for further protein-protein interactions. Multiple isoforms of ATG16 are known to exist.

Synonyms:

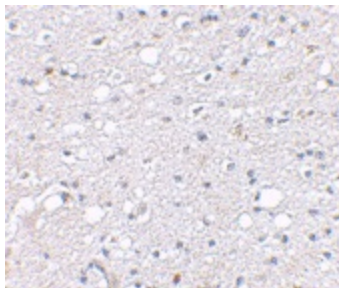
SIR2; SIR2L; SIR2L2

Protein Families:

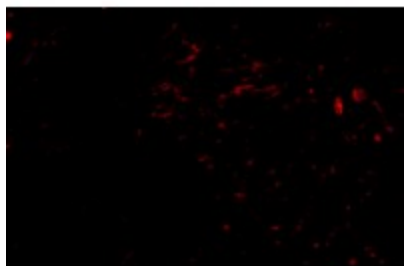
Druggable Genome, Transcription Factors

Product images:

Western blot analysis of SIRT2 in human brain lysate with SIRT2 antibody at (A) 2.5 and (B) 5 ug/ml.



Immunohistochemical staining of human brain tissue using Sirt2 antibody at 2.5 ug/ml.



Immunofluorescence of sirt2 in human brain tissue with sirt2 antibody at 20 ug/mL.