

Product datasheet for **TA306531**

SLITRK6 Rabbit Polyclonal Antibody

Product data:

Product Type:	Primary Antibodies
Applications:	IF, IHC, WB
Recommended Dilution:	WB: 0.5 - 1 ug/mL, ICC: 2.5 ug/mL, IF: 20 ug/mL
Reactivity:	Human, Mouse, Rat
Host:	Rabbit
Isotype:	IgG
Clonality:	Polyclonal
Immunogen:	Slitrk6 antibody was raised against a 16 amino acid peptide from near the carboxy terminus of human Slitrk6.
Formulation:	PBS containing 0.02% sodium azide.
Concentration:	1ug/ul
Purification:	Affinity chromatography purified via peptide column
Conjugation:	Unconjugated
Storage:	Store at -20°C as received.
Stability:	Stable for 12 months from date of receipt.
Gene Name:	SLIT and NTRK like family member 6
Database Link:	NP_115605 Entrez Gene 239250 Mouse Entrez Gene 290467 Rat Entrez Gene 84189 Human Q9H5Y7



[View online »](#)

Background:

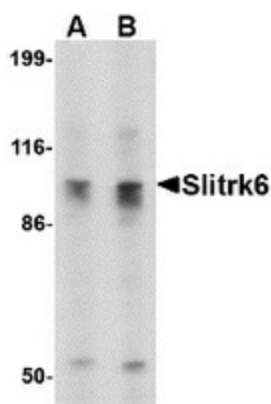
SLIT and NTRK-like family 6 (Slitrk6) is a member a protein family consisting of six homologous transmembrane proteins (Slitrk1-6) that share two conserved leucine-rich repeat domains in the extracellular domain and have significant homology to Slit, a secreted axonal growth-controlling protein. These proteins are also homologous to trk neurotrophin receptors in their intracellular domains. Expression of Slitrk proteins is highly restricted to neural and brain tumor tissues, but varies within the protein family. Slitrk6 expression has been observed in tissues such as tongue, lung, gastrointestinal tract, and pancreas. Like every other Slitrk protein except Slitrk1, overexpression of Slitrk6 inhibited neurite outgrowth in cultured neurons, suggesting that these proteins are involved in the control of neurite outgrowth. At least two isoforms of Slitrk6 are known to exist. This antibody is predicted to have no cross-reactivity to other Slitrk proteins.

Synonyms:

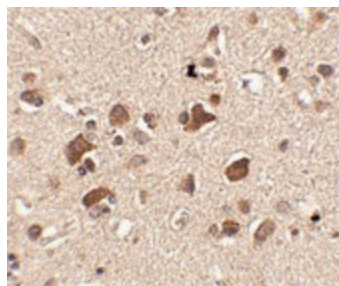
DFNMYP

Protein Families:

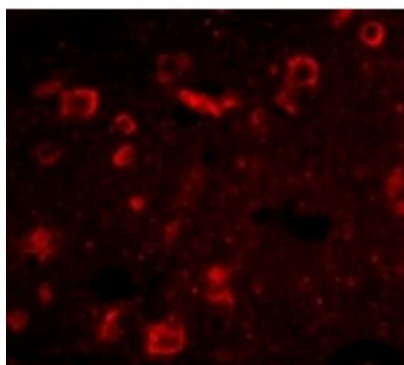
Druggable Genome, Transmembrane

Product images:

Western blot analysis of Slitrk6 in SK-N-SH cell lysate with Slitrk6 antibody at (A) 0.5 and (B) 1 ug/ml.



Immunohistochemistry of Slitrk6 in human brain tissue with Slitrk6 antibody at 2.5 ug/ml.



Immunofluorescence of Slitrk6 in Human Brain cells with Slitrk6 antibody at 20 ug/mL.