

Product datasheet for **TA306525**

SLITRK3 Rabbit Polyclonal Antibody

Product data:

Product Type:	Primary Antibodies
Applications:	IF, IHC, WB
Recommended Dilution:	WB: 0.25 and 0.5 ug/mL, ICC: 2.5 ug/mL, IF: 20 ug/mL
Reactivity:	Human, Mouse
Host:	Rabbit
Isotype:	IgG
Clonality:	Polyclonal
Immunogen:	Slitrk3 antibody was raised against a 14 amino acid peptide from near the carboxy terminus of human Slitrk3.
Formulation:	PBS containing 0.02% sodium azide.
Concentration:	1ug/ul
Purification:	Affinity chromatography purified via peptide column
Conjugation:	Unconjugated
Storage:	Store at -20°C as received.
Stability:	Stable for 12 months from date of receipt.
Gene Name:	SLIT and NTRK like family member 3
Database Link:	NP_055741 Entrez Gene 386750 Mouse Entrez Gene 22865 Human O94933

Background: SLIT and NTRK-like family 3 (Slitrk3) is a member a protein family consisting of six homologous transmembrane proteins (Slitrk1-6) that share two conserved leucine-rich repeat domains in the extracellular domain and have significant homology to Slit, a secreted axonal growth-controlling protein. These proteins are also homologous to trk neurotrophin receptors in their intracellular domains. Expression of Slitrk proteins is highly restricted to neural and brain tumor tissues, but varies within the protein family. Like every other Slitrk protein except Slitrk1, overexpression of Slitrk3 inhibited neurite outgrowth in cultured neurons, suggesting that these proteins are involved in the control of neurite outgrowth. This antibody is predicted to have no cross-reactivity to other Slitrk proteins.

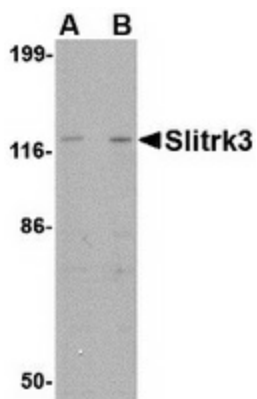


[View online »](#)

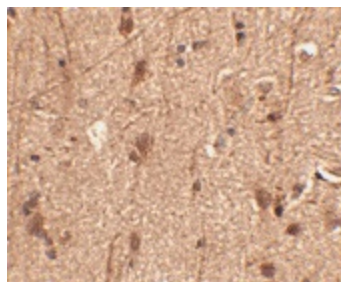
Synonyms: KIAA0848; MGC138681

Protein Families: Transmembrane

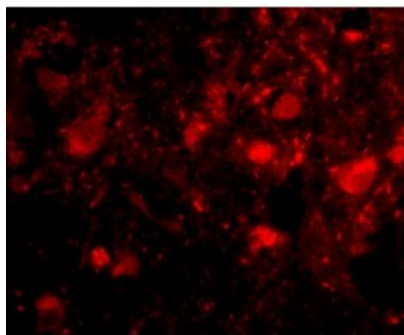
Product images:



Western blot analysis of Slitrk3 in SK-N-SH cell lysate with Slitrk3 antibody at (A) 0.25 and (B) 0.5 ug/ml.



Immunohistochemistry of Slitrk3 in human brain tissue with Slitrk3 antibody at 2.5 ug/ml



Immunofluorescence of slitrk3 in human brain tissue with slitrk3 antibody at 20 ug/mL.