

## Product datasheet for **TA306523**

### SLITRK2 Rabbit Polyclonal Antibody

#### Product data:

Product Type:	Primary Antibodies
Applications:	IF, IHC, WB
Recommended Dilution:	WB: 1 - 2 ug/mL, ICC: 2.5 ug/mL, IF: 20 ug/mL
Reactivity:	Human, Mouse, Rat
Host:	Rabbit
Isotype:	IgG
Clonality:	Polyclonal
Immunogen:	Slitrk2 antibody was raised against a 17 amino acid peptide from near the carboxy terminus of human Slitrk2.
Formulation:	PBS containing 0.02% sodium azide.
Concentration:	1ug/ul
Purification:	Affinity chromatography purified via peptide column
Conjugation:	Unconjugated
Storage:	Store at -20°C as received.
Stability:	Stable for 12 months from date of receipt.
Gene Name:	SLIT and NTRK like family member 2
Database Link:	<a href="#">NP_001137475</a> <a href="#">Entrez Gene 245450 Mouse</a> <a href="#">Entrez Gene 309349 Rat</a> <a href="#">Entrez Gene 84631 Human</a> <a href="#">Q9H156</a>



[View online »](#)

**Background:**

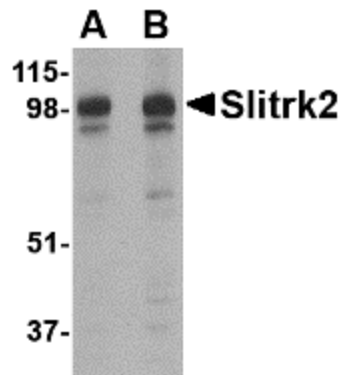
SLIT and NTRK-like family 2 (Slitrk2) is a member a protein family consisting of six homologous transmembrane proteins (Slitrk1-6) that share two conserved leucine-rich repeat domains in the extracellular domain and have significant homology to Slit, a secreted axonal growth-controlling protein. These proteins are also homologous to trk neurotrophin receptors in their intracellular domains. Expression of Slitrk proteins is highly restricted to neural and brain tumor tissues, but varies within the family. For example, Slitrk2 is expressed primarily in neurons in the ventricular layer of the brain. Like every other Slitrk protein except Slitrk1, overexpression of Slitrk2 inhibited neurite outgrowth in cultured neurons. Deletion analysis indicated that the functional difference between Slitrk2 and Slitrk1 is within their intracellular domains. At least two isoforms of this protein are known to exist. This antibody is predicted to have no cross-reactivity to other Slitrk proteins.

**Synonyms:**

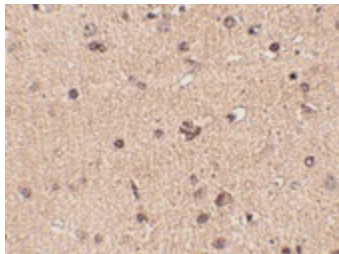
CXorf2; SLITL1

**Protein Families:**

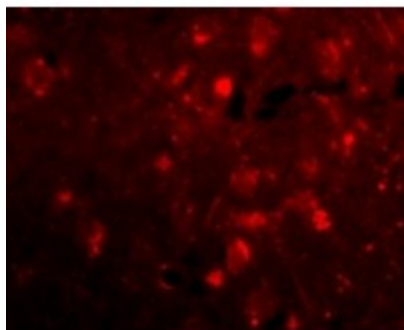
Transmembrane

**Product images:**

Western blot analysis of Slitrk2 in rat brain tissue lysate with Slitrk2 antibody at (A) 1 and (B) 2 ug/ml.



Immunohistochemistry of Slitrk2 in human brain tissue with Slitrk2 antibody at 2.5 ug/ml.



Immunofluorescence of Slitrk2 in Human Brain cells with Slitrk2 antibody at 20 ug/mL.