

## Product datasheet for **TA306521**

### SLITRK1 Rabbit Polyclonal Antibody

#### Product data:

Product Type:	Primary Antibodies
Applications:	IF, IHC, WB
Recommended Dilution:	WB: 1 - 2 ug/mL, ICC: 2.5 ug/mL, IF: 20 ug/mL
Reactivity:	Human, Mouse, Rat
Host:	Rabbit
Isotype:	IgG
Clonality:	Polyclonal
Immunogen:	Slitrk1 antibody was raised against a 16 amino acid peptide from near the carboxy terminus of human Slitrk1.
Formulation:	PBS containing 0.02% sodium azide.
Concentration:	1ug/ul
Purification:	Affinity chromatography purified via peptide column
Conjugation:	Unconjugated
Storage:	Store at -20°C as received.
Stability:	Stable for 12 months from date of receipt.
Gene Name:	SLIT and NTRK like family member 1
Database Link:	<a href="#">NP_443142</a> <a href="#">Entrez Gene 76965 Mouse</a> <a href="#">Entrez Gene 306147 Rat</a> <a href="#">Entrez Gene 114798 Human</a> <a href="#">Q96PX8</a>



[View online »](#)

**Background:**

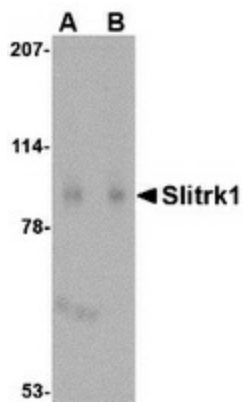
SLIT and NTRK-like family 1 (Slitrk1) is a member a protein family consisting of six homologous transmembrane proteins (Slitrk1-6) that share two conserved leucine-rich repeat domains in the extracellular domain and have significant homology to Slit, a secreted axonal growth-controlling protein. These proteins are also homologous to trk neurotrophin receptors in their intracellular domains. Expression of Slitrk proteins is highly restricted to neural and brain tumor tissues, but varies within the family. For example, Slitrk1 is expressed primarily in mature neurons. Overexpression of Slitrk1 in transfected neuronal cells induced unipolar neurites, while expression of the other Slitrk proteins inhibited neurite outgrowth, suggesting that these proteins are involved in the control of neurite outgrowth. While Slitrk1 variants have been suggested associated with Tourette's Syndrome, it is thought to play only a minor role if at all. This antibody is predicted to have no cross-reactivity to other Slitrk proteins.

**Synonyms:**

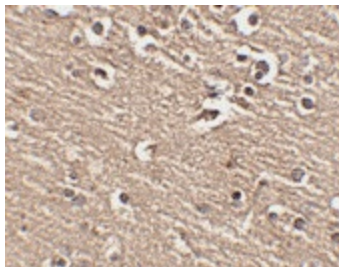
LRRC12; TTM

**Protein Families:**

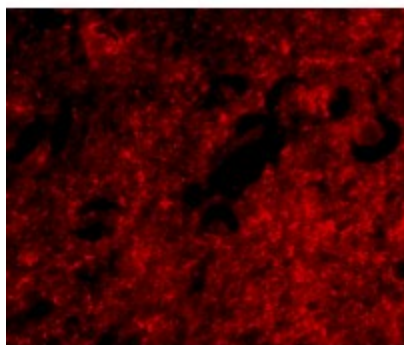
Transmembrane

**Product images:**

Western blot analysis of Slitrk1 in human brain tissue lysate with Slitrk1 antibody at (A) 1 and (B) 2 ug/ml.



Immunohistochemistry of Slitrk1 in human brain tissue with Slitrk1 antibody at 2.5 ug/ml.



Immunofluorescence of slitrk1 in human brain tissue with slitrk1 antibody at 20 ug/mL.