

Product datasheet for **TA306520**

FBXL20 Rabbit Polyclonal Antibody

Product data:

Product Type:	Primary Antibodies
Applications:	IF, IHC, WB
Recommended Dilution:	WB: 0.5 - 1 ug/mL, ICC: 2.5 ug/mL, IF: 20 ug/mL
Reactivity:	Human, Mouse, Rat
Host:	Rabbit
Isotype:	IgG
Clonality:	Polyclonal
Immunogen:	SCRAPPER antibody was raised against a 18 amino acid peptide near the amino terminus of the human SCRAPPER.
Formulation:	PBS containing 0.02% sodium azide.
Concentration:	1 mg/ml
Purification:	Affinity chromatography purified via peptide column
Conjugation:	Unconjugated
Storage:	Store at -20°C as received.
Stability:	Stable for 12 months from date of receipt.
Gene Name:	F-box and leucine-rich repeat protein 20
Database Link:	NP_116264 Entrez Gene 84961 Human Q96IG2

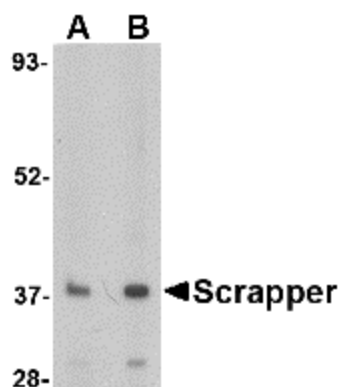
Background: Members of the F-box protein family, such as Scrapper, are characterized by an approximately 40-amino acid F-box motif. SCF complexes, formed by SKP1, cullin, and F-box proteins, act as protein-ubiquitin ligases. Scrapper is selectively expressed in the brain, broadly expressed within the mouse CNS and is abundant at presynaptic membrane. Scrapper has orthologs in *C. elegans*, *D. melanogaster*, and mammals which suggests that it might function as an important membrane-localized E3 ligase in various species. Scrapper is a major presynaptic E3 ubiquitin ligase that acts through RIM1a via degradation and the ubiquitin-proteasome-system (UPS) pathway to critically regulate synaptic transmission. This identifies protein degradation as a mechanism for holding synaptic communication in check.



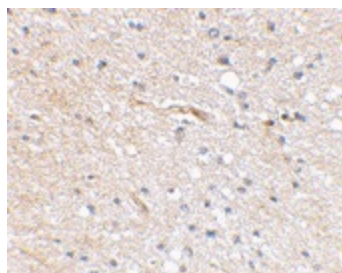
[View online »](#)

Synonyms: Fbl2; Fbl20

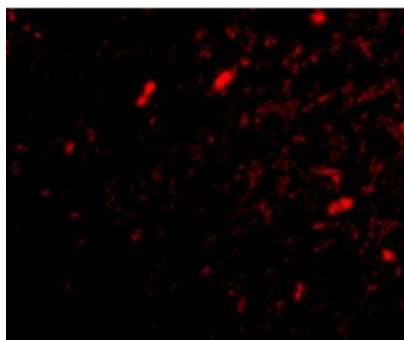
Product images:



Western blot analysis of SCRAPPER in A20 cell lysate with SCRAPPER antibody at (A) 0.5 and (B) 1 ug/ml.



Immunohistochemical staining of human brain tissue using Scrapper antibody at 2.5 ug/ml.



Immunofluorescence of scrapper in human brain tissue with scrapper antibody at 20 ug/mL.