

## Product datasheet for **TA306517**

### ATG5 Rabbit Polyclonal Antibody

#### Product data:

Product Type:	Primary Antibodies
Applications:	IF, IHC, WB
Recommended Dilution:	WB: 1 - 2 ug/mL, ICC: 2.5 ug/mL, IF: 20 ug/mL
Reactivity:	Human, Mouse, Rat
Host:	Rabbit
Isotype:	IgG
Clonality:	Polyclonal
Immunogen:	ATG5 antibody was raised against a 16 amino acid peptide from near the amino terminus of human ATG5.
Formulation:	PBS containing 0.02% sodium azide.
Concentration:	1ug/ul
Purification:	Affinity chromatography purified via peptide column
Conjugation:	Unconjugated
Storage:	Store at -20°C as received.
Stability:	Stable for 12 months from date of receipt.
Gene Name:	autophagy related 5
Database Link:	<a href="#">NP_004840</a> <a href="#">Entrez Gene 11793 Mouse</a> <a href="#">Entrez Gene 365601 Rat</a> <a href="#">Entrez Gene 9474 Human</a> <a href="#">A9UGY9</a>



[View online »](#)

**Background:**

Autophagy, the process of bulk degradation of cellular proteins through an autophagosomal-lysosomal pathway is important for normal growth control and may be defective in tumor cells. It is involved in the preservation of cellular nutrients under starvation conditions as well as the normal turnover of cytosolic components. This process is negatively regulated by TOR (Target of rapamycin) through phosphorylation of autophagy protein APG1. ATG5, another member of the autophagy protein family, forms a conjugate with ATG12; this conjugate has a ubiquitin-protein ligase (E3)-like activity for protein lipidation in autophagy. This conjugate also associates with innate immune response proteins such as RIG-I and VISA (also known as IPS-1), inhibiting type I interferon production and permitting viral replication in host cells. Three isoforms of ATG5 are known to exist; this ATG5 antibody will only detect the longest isoform.

**Synonyms:**

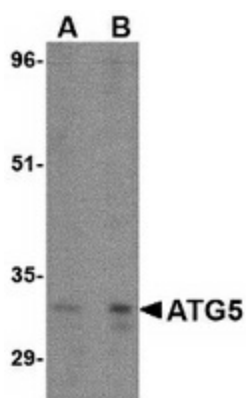
APG5; APG5-LIKE; APG5L; ASP; hAPG5

**Protein Families:**

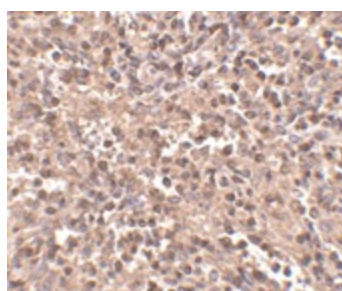
Druggable Genome

**Protein Pathways:**

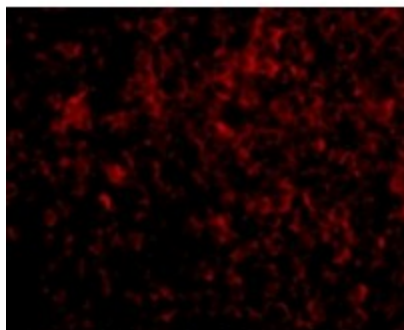
Regulation of autophagy, RIG-I-like receptor signaling pathway

**Product images:**

Western blot analysis of ATG5 in rat spleen tissue lysate with ATG5 antibody at (A) 1 and (B) 2 ug/ml.



Immunohistochemistry of ATG5 in human spleen tissue with ATG5 antibody at 2.5 ug/ml.



Immunofluorescence of ATG5 in Human Spleen cells with ATG5 antibody at 20 ug/mL.