

Product datasheet for **TA306515**

Cathelicidin (CAMP) Rabbit Polyclonal Antibody

Product data:

Product Type:	Primary Antibodies
Applications:	IF, IHC, WB
Recommended Dilution:	WB: 1 ug/mL, ICC: 5 ug/mL, IF: 20 ug/mL
Reactivity:	Human, Mouse, Rat
Host:	Rabbit
Isotype:	IgG
Clonality:	Polyclonal
Immunogen:	Cathelicidin antibody was raised against a 17 amino acid peptide near the carboxy terminus of the human Cathelicidin.
Formulation:	PBS containing 0.02% sodium azide.
Concentration:	lot specific
Purification:	Affinity chromatography purified via peptide column
Conjugation:	Unconjugated
Storage:	Store at -20°C as received.
Stability:	Stable for 12 months from date of receipt.
Gene Name:	cathelicidin antimicrobial peptide
Database Link:	NP_004336 Entrez Gene 12796 Mouse Entrez Gene 316010 Rat Entrez Gene 820 Human P49913



[View online »](#)

Background:

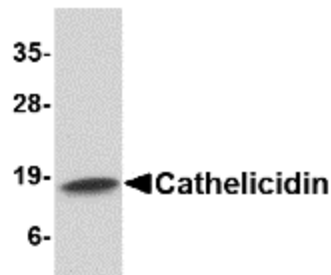
One component of host defense at mucosal surfaces is epithelial-derived antimicrobial peptides. Cathelicidins are one family of antimicrobial peptides characterized by conserved pro-peptide sequences that have been identified in epithelial tissues and some myeloid cells of humans and animals. LL-37/hCAP-18 is the only Cathelicidin found in humans and is expressed in inflammatory and epithelial cells. The presence of these molecules is essential for defense against invasive bacterial infection in skin. Besides their direct antimicrobial function, Cathelicidins have multiple roles in mediating innate and adaptive immunity, such as endotoxin neutralizing, angiogenesis, wound healing and promoting neutrophil chemotaxis and mast cell recruitment. Finally, Cathelicidin antimicrobial peptides qualify as prototypes of innovative drugs that may be used to treat infection and/or modulate the immune response.

Synonyms:

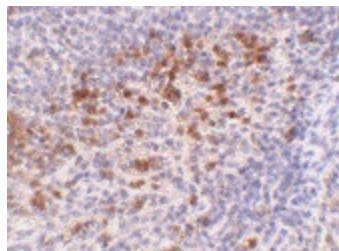
CAP-18; CAP18; CRAMP; FALL-39; FALL39; HSD26; LL37

Protein Families:

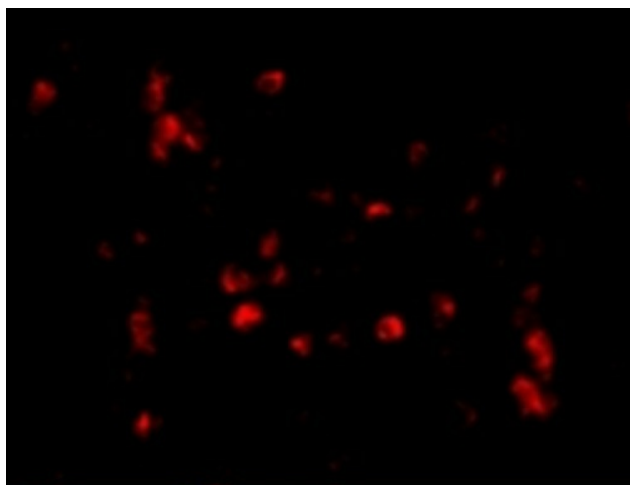
Secreted Protein, Transmembrane

Product images:

Western blot analysis of Cathelicidin in Human spleen tissue lysate with Cathelicidin antibody at 1 ug/ml.



Immunohistochemistry of Cathelicidin in human spleen tissue with Cathelicidin antibody at 5 ug/ml.



Immunofluorescence of Cathelicidin in Human Spleen cells with Cathelicidin antibody at 20 ug/mL.