

## Product datasheet for **TA306513**

### ATG16L1 Rabbit Polyclonal Antibody

#### Product data:

Product Type:	Primary Antibodies
Applications:	IF, WB
Recommended Dilution:	WB: 1 - 2 ug/mL, ICC: 2 ug/mL, IF: 4 ug/mL
Reactivity:	Human, Mouse, Rat
Host:	Rabbit
Isotype:	IgG
Clonality:	Polyclonal
Immunogen:	ATG16 antibody was raised against a 18 amino acid peptide from near the amino terminus of human ATG16.
Formulation:	PBS containing 0.02% sodium azide.
Concentration:	1ug/ul
Purification:	Affinity chromatography purified via peptide column
Conjugation:	Unconjugated
Storage:	Store at -20°C as received.
Stability:	Stable for 12 months from date of receipt.
Gene Name:	autophagy related 16 like 1
Database Link:	<a href="#">NP_110430</a> <a href="#">Entrez Gene 55054 Human</a> <a href="#">Q676U5</a>



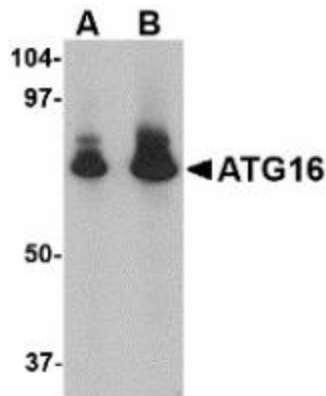
[View online »](#)

**Background:**

Autophagy, the process of bulk degradation of cellular proteins through an autophagosomal-lysosomal pathway is important for normal growth control and may be defective in tumor cells. It is involved in the preservation of cellular nutrients under starvation conditions as well as the normal turnover of cytosolic components. This process is negatively regulated by TOR (Target of rapamycin) through phosphorylation of autophagy protein APG1. ATG16, another member of the autophagy protein family, forms a complex with the ATG5-ATG12 conjugate. This multimeric protein has been shown to be essential for autophagosome formation in both yeast and mammals and targets the ATG5-ATG12 complex to the autophagic isolation membrane during the formation of the autophagosome. Because mammalian ATG16 has seven WD-repeats in its C-terminal domain, it has been suggested that these may form a platform for further protein-protein interactions. Multiple isoforms of ATG16 are known to exist.

**Synonyms:**

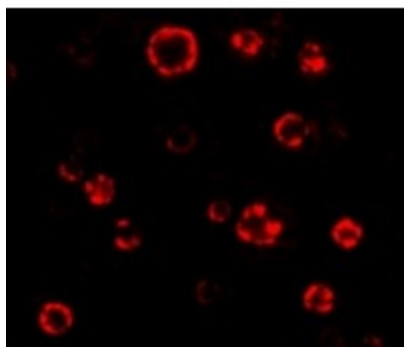
APG16L; ATG16A; ATG16L; IBD10; WDR30

**Product images:**

Western blot analysis of ATG16 in HeLa cell lysate with ATG16 antibody at (A) 1 and (B) 2 ug/mL.



Immunocytochemistry of ATG16 in HeLa cells with ATG16 antibody at 2 ug/mL.



Immunofluorescence of ATG16 in HeLa cells with ATG16 antibody at 4.75 ug/mL.