

Product datasheet for **TA306512**

Apg12 (ATG12) Rabbit Polyclonal Antibody

Product data:

Product Type:	Primary Antibodies
Applications:	IF, IHC, WB
Recommended Dilution:	WB: 0.5 - 1 ug/mL, ICC: 2.5 ug/mL, IF: 20 ug/mL
Reactivity:	Human, Mouse, Rat
Host:	Rabbit
Isotype:	IgG
Clonality:	Polyclonal
Immunogen:	ATG12 antibody was raised against a 15 amino acid peptide from near the center of human ATG12.
Formulation:	PBS containing 0.02% sodium azide.
Concentration:	1ug/ul
Purification:	Affinity chromatography purified via peptide column
Conjugation:	Unconjugated
Storage:	Store at -20°C as received.
Stability:	Stable for 12 months from date of receipt.
Gene Name:	autophagy related 12
Database Link:	NP_004698 Entrez Gene 67526 Mouse Entrez Gene 361321 Rat Entrez Gene 9140 Human O94817



[View online »](#)

Background:

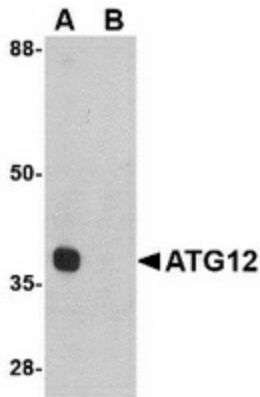
Autophagy, the process of bulk degradation of cellular proteins through an autophagosomal-lysosomal pathway is important for normal growth control and may be defective in tumor cells. It is involved in the preservation of cellular nutrients under starvation conditions as well as the normal turnover of cytosolic components. This process is negatively regulated by TOR (Target of rapamycin) through phosphorylation of autophagy protein APG1. ATG12, another member of the autophagy protein family, forms a conjugate with ATG5; this conjugate has a ubiquitin-protein ligase (E3)-like activity for protein lipidation in autophagy. This conjugate also associates with innate immune response proteins such as RIG-I and VISA (also known as IPS-1), inhibiting type I interferon production and permitting viral replication in host cells. ATG12 has also been shown to interact with ATG10 in human embryonic kidney cells in the presence of ATG7. At least two isoforms of ATG12 are known to exist.

Synonyms:

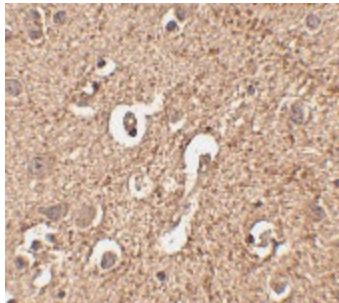
APG12; APG12L; FBR93; HAPG12

Protein Pathways:

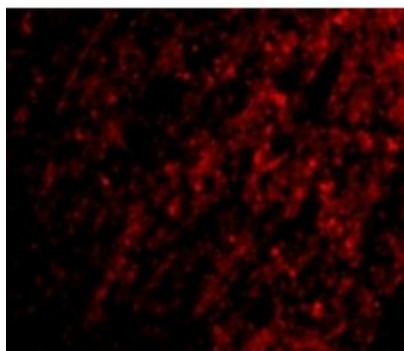
Regulation of autophagy, RIG-I-like receptor signaling pathway

Product images:

Western blot analysis of ATG12 in mouse heart tissue lysate with ATG12 antibody at 1 ug/ml in (A) the absence and (B) the presence of blocking peptide.



Immunohistochemistry of ATG12 in human brain tissue with ATG12 antibody at 2.5 ug/ml.



Immunofluorescence of ATG12 in Human Brain cells with ATG12 antibody at 20 ug/mL.