

Product datasheet for **TA306510**

PLXDC2 Rabbit Polyclonal Antibody

Product data:

Product Type:	Primary Antibodies
Applications:	IF, IHC, WB
Recommended Dilution:	WB: 0.5 - 1 ug/mL, ICC: 2.5 ug/mL, IF: 20 ug/mL
Reactivity:	Human, Mouse, Rat
Host:	Rabbit
Isotype:	IgG
Clonality:	Polyclonal
Immunogen:	Plxdc2 antibody was raised against a 17 amino acid peptide from near the carboxy terminus of human Plxdc2.
Formulation:	PBS containing 0.02% sodium azide.
Concentration:	1ug/ul
Purification:	Affinity chromatography purified via peptide column
Conjugation:	Unconjugated
Storage:	Store at -20°C as received.
Stability:	Stable for 12 months from date of receipt.
Gene Name:	plexin domain containing 2
Database Link:	NP_116201

[Entrez Gene 67448 Mouse](#)[Entrez Gene 361282 Rat](#)[Entrez Gene 84898 Human](#)
[Q6UX71](#)

Background: Plxdc2, also known as Tumor endothelial marker 7-related (TEM7R) encodes a protein with 57% amino acid identity to TEM7, the most abundant tumor endothelial marker. Plxdc2 is strongly expressed in the endothelial cells of the tumor stroma, but not in the endothelial cells of normal colonic tissue. Plxdc2 is also expressed at high levels in vessels of some normal tissues, with highest expression in muscle and lung. Plxdc2 and TEM7 may be important for tumor angiogenesis in humans. Cortactin was identified as a protein capable of binding to the extracellular region of both TEM7 and Plxdc2, and may provide new opportunities for the delivery of therapeutic and imaging agents to the vessels of solid tumors.

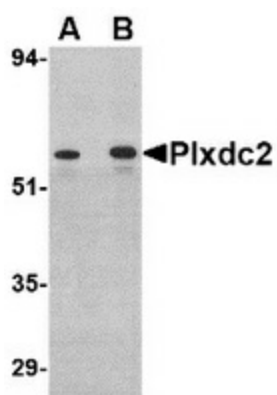


[View online »](#)

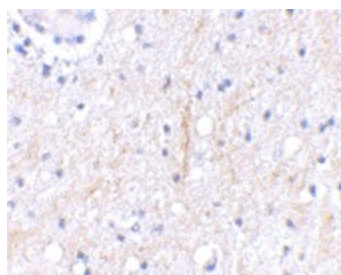
Synonyms: TEM7R

Protein Families: Druggable Genome, Transmembrane

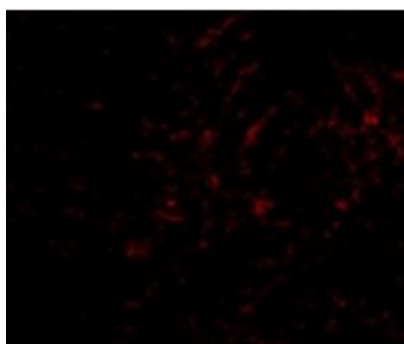
Product images:



Western blot analysis of Plxdc2 in human colon tissue lysate with Plxdc2 antibody at (A) 0.5 (B) 1 ug/ml.



Immunohistochemical staining of human brain tissue using Plxdc2 antibody at 2.5 ug/ml.



Immunofluorescence of Plxdc2 in Human Brain cells with Plxdc2 antibody at 50 ug/mL.