

## Product datasheet for **TA306505**

### SP110 Rabbit Polyclonal Antibody

#### Product data:

Product Type:	Primary Antibodies
Applications:	IF, IHC, WB
Recommended Dilution:	WB: 0.5 - 2 ug/mL, ICC: 2.5 ug/mL, IF: 20 ug/mL
Reactivity:	Human, Mouse, Rat
Host:	Rabbit
Isotype:	IgG
Clonality:	Polyclonal
Immunogen:	IPR1 antibody was raised against a 15 amino acid peptide near the carboxy terminus of the human IPR1.
Formulation:	PBS containing 0.02% sodium azide.
Concentration:	1ug/ul
Purification:	Affinity chromatography purified via peptide column
Conjugation:	Unconjugated
Storage:	Store at -20°C as received.
Stability:	Stable for 12 months from date of receipt.
Gene Name:	SP110 nuclear body protein
Database Link:	<a href="#">NP_004501</a> <a href="#">Entrez Gene 3431 Human</a> <a href="#">Q9HB58</a>



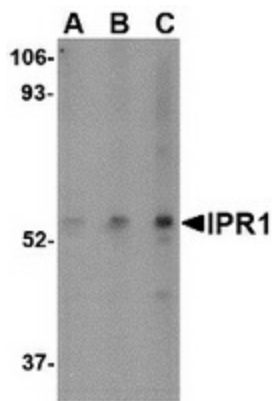
[View online »](#)

**Background:**

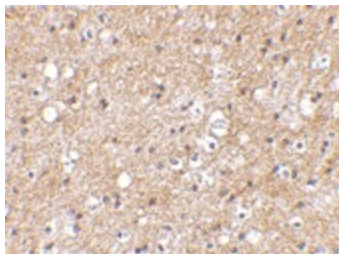
Susceptibility to tuberculosis (TB) in mice has recently been attributed to the IPR1 gene. IPR1 is a member of the SP100/SP140 family of nuclear body proteins and encodes a leukocyte-specific nuclear body component. The protein can function as an activator of gene transcription and may serve as a nuclear hormone receptor coactivator. Alternative splicing has been observed for this gene and three transcript variants, encoding distinct isoforms, have been identified. SP110 is the closest homolog of the IPR1 protein in humans. The IPR1/Sp110 gene product might play a role in integrating signals generated by intracellular pathogens with mechanisms controlling innate immunity, cell death, and pathogenesis. IPR1/Sp110 is up-regulated after infection with *M. tuberculosis* and required by *Anaplasma phagocytophilum* for infection of human promyelocytic cells. Defects in Sp110 are a cause of severely impaired resistance to infection by *M. tuberculosis*.

**Synonyms:**

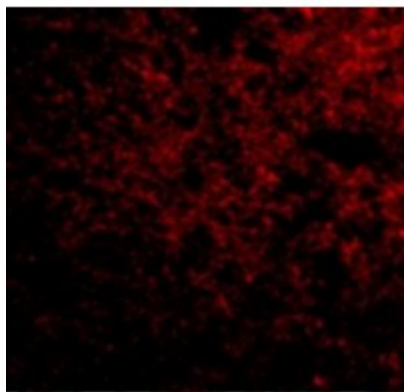
IFI41; IFI75; IPR1; VOD1

**Product images:**

Western blot analysis of IPR1 in HeLa cell lysate with IPR1 antibody at (A) 0.5, (B) 1, and (C) 2 ug/ml.



Immunohistochemical staining of human brain tissue using IPR1 antibody at 2.5 ug/ml.



Immunofluorescence of IPR1 in Human Brain cells with IPR1 antibody at 50 ug/mL.