

Product datasheet for **TA306504**

FEZ2 Rabbit Polyclonal Antibody

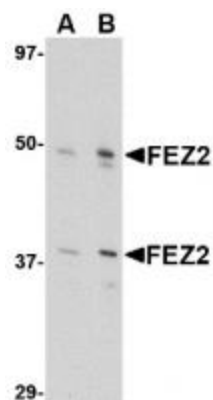
Product data:

| | |
|-----------------------|--|
| Product Type: | Primary Antibodies |
| Applications: | IF, WB |
| Recommended Dilution: | WB: 0.5 - 1 ug/mL, IF: 5 ug/mL |
| Reactivity: | Human, Mouse, Rat |
| Host: | Rabbit |
| Isotype: | IgG |
| Clonality: | Polyclonal |
| Immunogen: | FEZ2 antibody was raised against a 15 amino acid peptide from near the center of human FEZ2. |
| Formulation: | PBS containing 0.02% sodium azide. |
| Concentration: | 1ug/ul |
| Purification: | Affinity chromatography purified via peptide column |
| Conjugation: | Unconjugated |
| Storage: | Store at -20°C as received. |
| Stability: | Stable for 12 months from date of receipt. |
| Gene Name: | fasciculation and elongation protein zeta 2 |
| Database Link: | NP_001036013 Entrez Gene 94269 Rat Entrez Gene 225020 Mouse Entrez Gene 9637 Human Q9UHY8 |
| Background: | Fasciculation and elongation protein zeta-2 (FEZ2) is a homolog to the mammalian FEZ1, itself an ortholog of the <i>C. elegans</i> UNC-76. In contrast to FEZ1, FEZ2 mRNA is widely expressed in mouse tissues. FEZ2 interacts with protein kinase C (PKC)-z substrate and induces neurite extension of PC12 cells when co-expressed with a constitutively active form of PKC-z, suggesting FEZ2 may play an important role in the morphological changes of various cells by associating with PKC-z in a tissue non-specific manner. FEZ2 can interact with FEZ1 through its c-terminal regions and especially its coiled-coil region. At least two isoforms of FEZ2 are known to exist. |
| Synonyms: | HUM3CL |

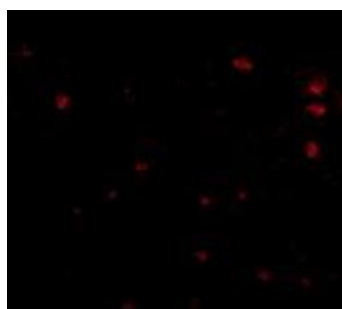


[View online »](#)

Product images:



Western blot analysis of FEZ2 in 3T3 cell lysate with FEZ2 antibody at (A) 0.5, and (B) 1 ug/mL.



Immunofluorescence of human brain tissue using FEZ2 antibody at 5 ug/mL.