

Product datasheet for **TA306503**

FEZ2 Rabbit Polyclonal Antibody

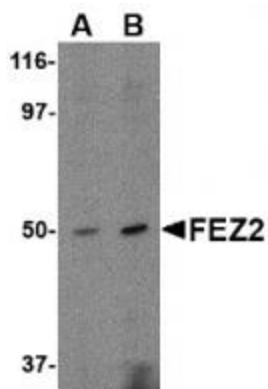
Product data:

Product Type:	Primary Antibodies
Applications:	IF, WB
Recommended Dilution:	WB: 0.5 - 1 ug/mL, IF: 5 ug/mL
Reactivity:	Human, Mouse, Rat
Host:	Rabbit
Isotype:	IgG
Clonality:	Polyclonal
Immunogen:	FEZ2 antibody was raised against a 15 amino acid peptide from near the carboxy terminus of human FEZ2.
Formulation:	PBS containing 0.02% sodium azide.
Concentration:	1ug/ul
Purification:	Affinity chromatography purified via peptide column
Conjugation:	Unconjugated
Storage:	Store at -20°C as received.
Stability:	Stable for 12 months from date of receipt.
Gene Name:	fasciculation and elongation protein zeta 2
Database Link:	NP_001036013 Entrez Gene 94269 Rat Entrez Gene 225020 Mouse Entrez Gene 9637 Human Q9UHY8
Background:	Fasciculation and elongation protein zeta-2 (FEZ2) is a homolog to the mammalian FEZ1, itself an ortholog of the <i>C. elegans</i> UNC-76. In contrast to FEZ1, FEZ2 mRNA is widely expressed in mouse tissues. FEZ2 interacts with protein kinase C (PKC)-z substrate and induces neurite extension of PC12 cells when co-expressed with a constitutively active form of PKC-z, suggesting FEZ2 may play an important role in the morphological changes of various cells by associating with PKC-z in a tissue non-specific manner. FEZ2 can interact with FEZ1 through its c-terminal regions and especially its coiled-coil region. At least two isoforms of FEZ2 are known to exist.
Synonyms:	HUM3CL



[View online »](#)

Product images:



Western blot analysis of FEZ2 in mouse brain tissue lysate with FEZ2 antibody at (A) 0.5, and (B) 1 ug/mL.



Immunofluorescence of human brain tissue using FEZ25 antibody at 5 ug/mL.