

Product datasheet for **TA306502**

Z DNA binding protein (ZBP1) Rabbit Polyclonal Antibody

Product data:

Product Type:	Primary Antibodies
Applications:	IF, IHC, WB
Recommended Dilution:	WB: 0.5 - 2 ug/mL, ICC: 2.5 ug/mL, IF: 20 ug/mL
Reactivity:	Human, Mouse, Rat
Host:	Rabbit
Isotype:	IgG
Clonality:	Polyclonal
Immunogen:	ZBP1 antibody was raised against a 18 amino acid peptide from near the carboxy terminus of human ZBP1.
Formulation:	PBS containing 0.02% sodium azide.
Concentration:	1ug/ul
Purification:	Affinity chromatography purified via peptide column
Conjugation:	Unconjugated
Storage:	Store at -20°C as received.
Stability:	Stable for 12 months from date of receipt.
Gene Name:	Z-DNA binding protein 1
Database Link:	NP_001153889 Entrez Gene 58203 Mouse Entrez Gene 171091 Rat Entrez Gene 81030 Human Q9H171



[View online »](#)

Background:

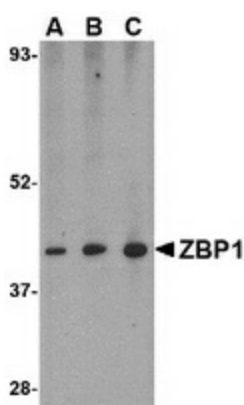
Z-DNA binding protein 1 (ZBP1) belongs to a family of proteins that contain the Za domain which binds specifically to left-handed Z-DNA and Z-RNA. ZBP1 was initially identified as a novel gene that was up-regulated in activated macrophages in mice bearing ascites tumors, suggesting that it may play a role in processes such as host response in neoplasia. More recent reports indicate that the cytosolic ZBP1 can act like the toll-like receptor TLR9 by detecting cytosolic double-stranded (ds) DNA and trigger induction of type I interferon and other innate immune responses. It is thought that the binding of ZBP1 to dsDNA enhances its association with innate immune response proteins such as the IRF3 transcription factor and the serine/threonine kinase TBK1 (also known as NAK). Multiple isoforms of ZBP1 are known to exist.

Synonyms:

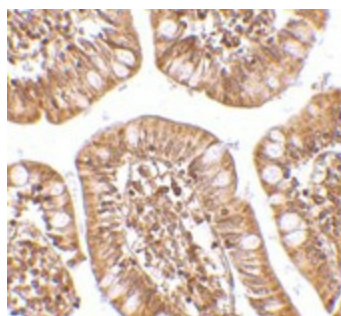
C20orf183; DAI; DLM-1; DLM1

Protein Pathways:

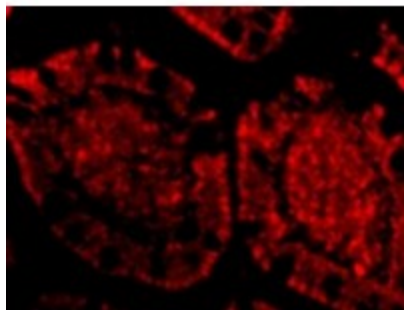
Cytosolic DNA-sensing pathway

Product images:

Western blot analysis of ZBP1 in mouse small intestine tissue lysate with ZBP1 antibody at (A) 0.5, (B) 1 and (C) 2 ug/ml.



Immunohistochemistry of ZBP1 in human small intestine tissue with ZBP1 antibody at 2.5 ug/ml.



Immunofluorescence of ZBP1 in Human Small Intestine tissue with ZBP1 antibody at 20 $\mu\text{g}/\text{mL}$.