

Product datasheet for **TA306492**

SLC9A1 Rabbit Polyclonal Antibody

Product data:

Product Type:	Primary Antibodies
Applications:	IF, IHC, WB
Recommended Dilution:	WB: 1 - 2 ug/mL, ICC: 2.5 ug/mL, IF: 20 ug/mL
Reactivity:	Human, Mouse, Rat
Host:	Rabbit
Isotype:	IgG
Clonality:	Polyclonal
Immunogen:	Nhe-1 antibody was raised against a 20 amino acid synthetic peptide near the carboxy terminus of the human Nhe-1. The immunogen is located within the last 50 amino acids of Nhe-1.
Formulation:	PBS containing 0.02% sodium azide.
Concentration:	1ug/ul
Purification:	Affinity chromatography purified via peptide column
Conjugation:	Unconjugated
Storage:	Store at -20°C as received.
Stability:	Stable for 12 months from date of receipt.
Gene Name:	solute carrier family 9 member A1
Database Link:	NP_003038 Entrez Gene 20544 Mouse Entrez Gene 24782 Rat Entrez Gene 6548 Human P19634



[View online »](#)

Background:

The Na⁺/H⁺ antiporter (Nhe-1) is a ubiquitous membrane-bound enzyme involved in pH regulation of vertebrate cells and is specifically inhibited by the diuretic drug amiloride and activated by a variety of signals including growth factors, mitogens, neurotransmitters, and tumor promoters. Nhe-1 acts as an anchor for actin filaments to control the integrity of the cortical cytoskeleton. This occurs through a previously unrecognized structural link between Nhe-1 and the actin-binding proteins ezrin, radixin, and moesin, collectively referred to as ERM proteins. A structural role for Nhe-1 has been proposed in regulating the cortical cytoskeleton that is independent of its function as an ion exchanger. It is also thought that Nhe-1 play a role in hypertension. At least two isoforms of Nhe-1 are known to exist.

Synonyms:

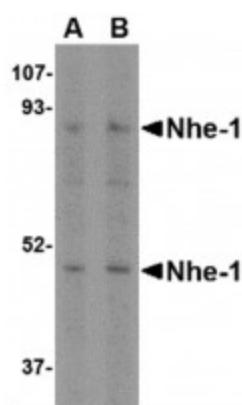
APNH; NHE-1; NHE1; PPP1R143

Protein Families:

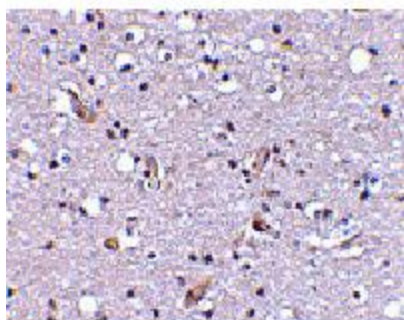
Druggable Genome, Transmembrane

Protein Pathways:

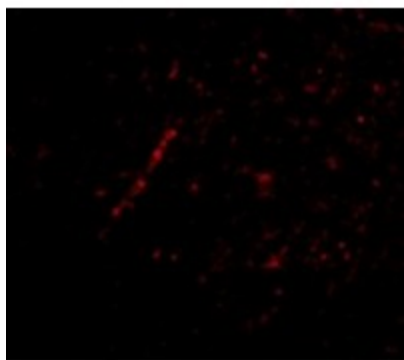
Cardiac muscle contraction, Regulation of actin cytoskeleton

Product images:

Western blot analysis of Nhe-1 in rat kidney tissue lysate with in with Nhe-1 antibody at (A) 1 and (B) 2µg/ml.



Immunohistochemical staining of human brain tissue using Nhe-1 antibody at 2.5µg/ml.



Immunofluorescence of Nhe-1 in Human Brain tissue with Nhe-1 antibody at 20ug/ml.