

Product datasheet for **TA306489**

GPR124 (ADGRA2) Rabbit Polyclonal Antibody

Product data:

Product Type:	Primary Antibodies
Applications:	IF, IHC, WB
Recommended Dilution:	WB: 2 - 4 ug/mL, ICC: 5 ug/mL, IF: 20 ug/mL
Reactivity:	Human, Rat
Host:	Rabbit
Isotype:	IgG
Clonality:	Polyclonal
Immunogen:	TEM5 antibody was raised against a 14 amino acid peptide near the center of human TEM5.
Formulation:	PBS containing 0.02% sodium azide.
Concentration:	1ug/ul
Purification:	Affinity chromatography purified via peptide column
Conjugation:	Unconjugated
Storage:	Store at -20°C as received.
Stability:	Stable for 12 months from date of receipt.
Gene Name:	adhesion G protein-coupled receptor A2
Database Link:	NP_116166 Entrez Gene 100363275 Rat Entrez Gene 25960 Human Q96PE1

Background: Tumor endothelial markers (TEMs) are significantly up-regulated during angiogenesis and neoangiogenesis that are crucial for the growth of solid tumors. TEMs localized on the cell surface and conserved across species are of particular interest for future development of anti-angiogenic therapies. These include TEMs such as TEM1, TEM5, TEM7 and TEM8. TEM5 is a member of the adhesion family of G protein coupled receptors and is localized on the surface of endothelial cells. TEM5 is a seven-pass transmembrane receptor, unlike TEM1, TEM7 and TEM8 which span the membrane once. TEM5 is abundantly expressed in tumor vessels, heart, placenta, ovary, small intestine, and colon. Proteolytically processed soluble TEM5 mediates endothelial cell survival during angiogenesis by linking integrin to glycosaminoglycans.

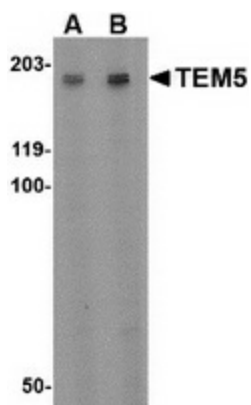


[View online »](#)

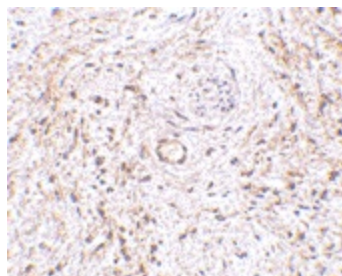
Synonyms: GPR124; TEM5

Protein Families: Druggable Genome, Transmembrane

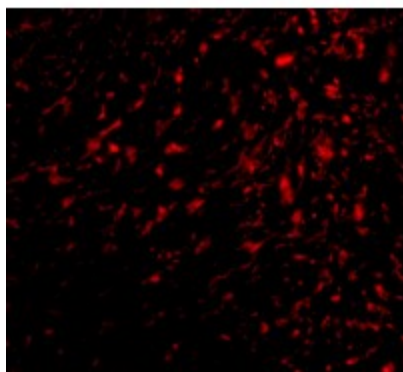
Product images:



Western blot analysis of TEM5 in rat kidney tissue lysate with TEM5 antibody at (A) 2 ug/ml and (B) 4 ug/ml.



Immunohistochemistry of TEM5 in human bladder tissue with TEM5 antibody at 5 ug/ml.



Immunofluorescence of TEM5 in human bladder tissue with TEM5 antibody at 20 ug/mL.