

Product datasheet for **TA306487**

TEM4 (ARHGEF17) Rabbit Polyclonal Antibody

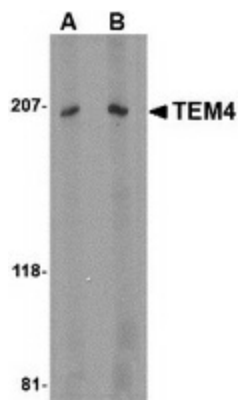
Product data:

Product Type:	Primary Antibodies
Applications:	IHC, WB
Recommended Dilution:	WB: 1 - 2 ug/mL, ICC: 2.5 ug/mL, IF: 20 ug/mL
Reactivity:	Human
Host:	Rabbit
Isotype:	IgG
Clonality:	Polyclonal
Immunogen:	TEM4 antibody was raised against a 18 amino acid peptide near the center of human TEM4.
Formulation:	PBS containing 0.02% sodium azide.
Concentration:	1ug/ul
Purification:	Affinity chromatography purified via peptide column
Conjugation:	Unconjugated
Storage:	Store at -20°C as received.
Stability:	Stable for 12 months from date of receipt.
Gene Name:	Rho guanine nucleotide exchange factor 17
Database Link:	NP_055601 Entrez Gene 9828 Human Q96PE2
Background:	Rho GTPases, which are activated by specific guanine-nucleotide exchange factors (GEFs), play pivotal roles in several cellular functions. TEM4, encoding a protein containing 1510 amino acids, contains a RhoGEF-specific Dbl homology (DH) domain but lacks their typical pleckstrin homology domain. TEM4 is a Rho-specific GEF with novel structural and regulatory properties and predominant expression in the heart. It couples tyrosine kinase signals with the activation of the rho/rac GTPases, thus leading to cell differentiation and/or proliferation. Elevated levels of TEM4, TEM5, TEM6, TEM7 and TEM7R were also raised in breast cancer tissues. TEM4 could also prove to be useful targets therapeutically.
Synonyms:	p164-RhoGEF; P164RHOGEF; RHOGEF17; TEM4
Protein Families:	Druggable Genome

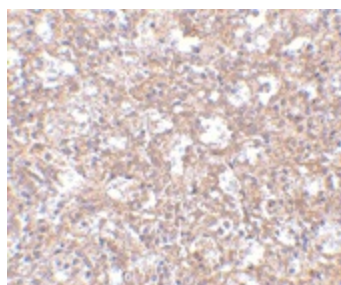


[View online »](#)

Product images:



Western blot analysis of TEM4 in Jurkat Cell lysate with TEM4 antibody at (A) 1 and (B) 2 ug/ml.



Immunohistochemistry of TEM4 in human spleen tissue with TEM4 antibody at 2.5 ug/ml.